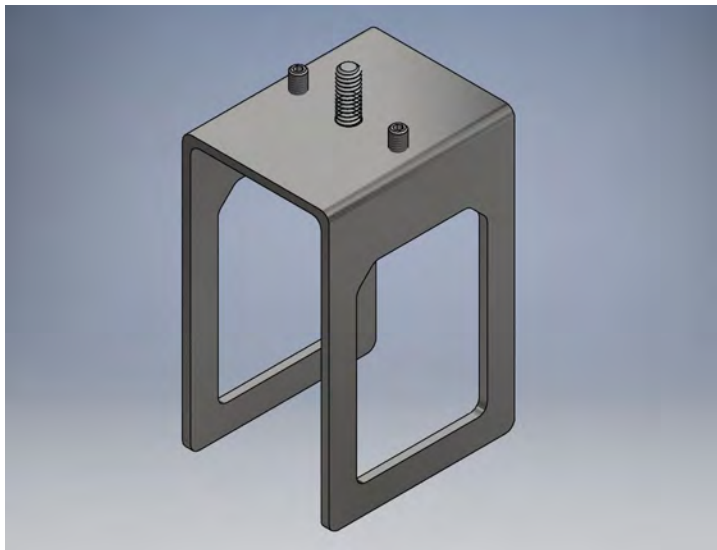
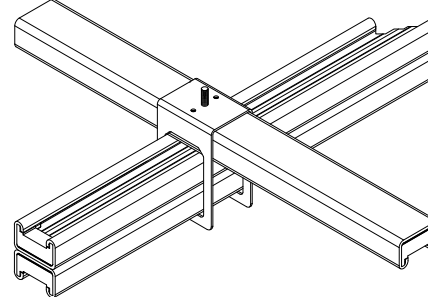


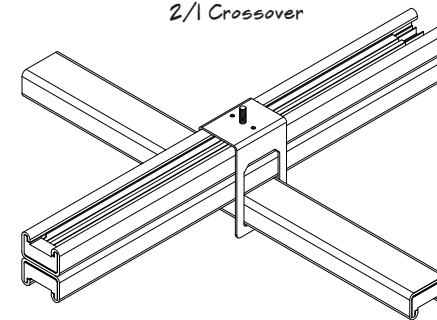
### DOUBLE HEIGHT CROSSOVER for use as L, T, X



1/2 Crossover



2/1 Crossover

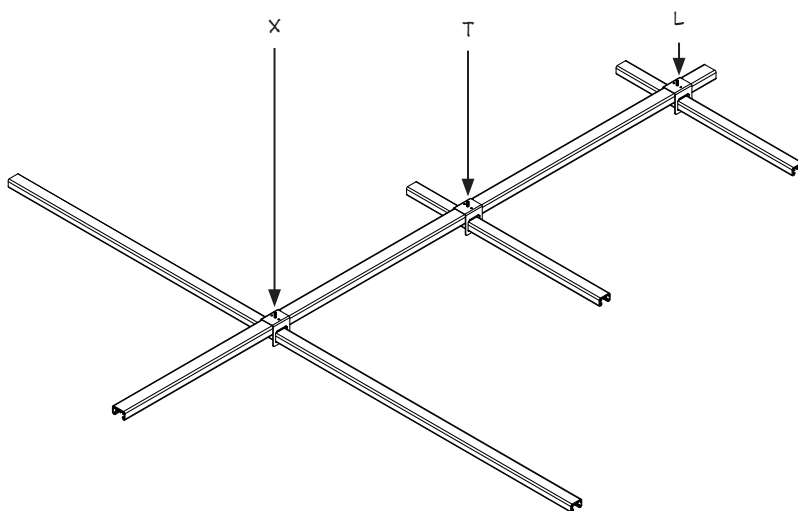


busSTRUT (double-deck)

Product	Length	Catalog Number
1/2 - 2/1	Double Single	ICD-S-(B)-ST-X

Finish - G=Galvanized W=White B=Black

**ONE over TWO** and **TWO over ONE** crossovers are for use with three busSTRUT lengths. Each crossover is a single unit for building L,T,X crossover grid configurations. The slimline crossover locks both busSTRUT lengths with set screws.



Crossovers provide the mechanical connection for building runs, rows, and grids. One universal crossover serves as an X,T, or an L intercept. The ONE over TWO and TWO over ONE crossovers are used when one double-deck length of busSTRUT intersects a single-deck length of busSTRUT, or vice versa.