

busSTRUT Shop Drawing Set

Express Rectangle (Large) - Lights & Power Drops

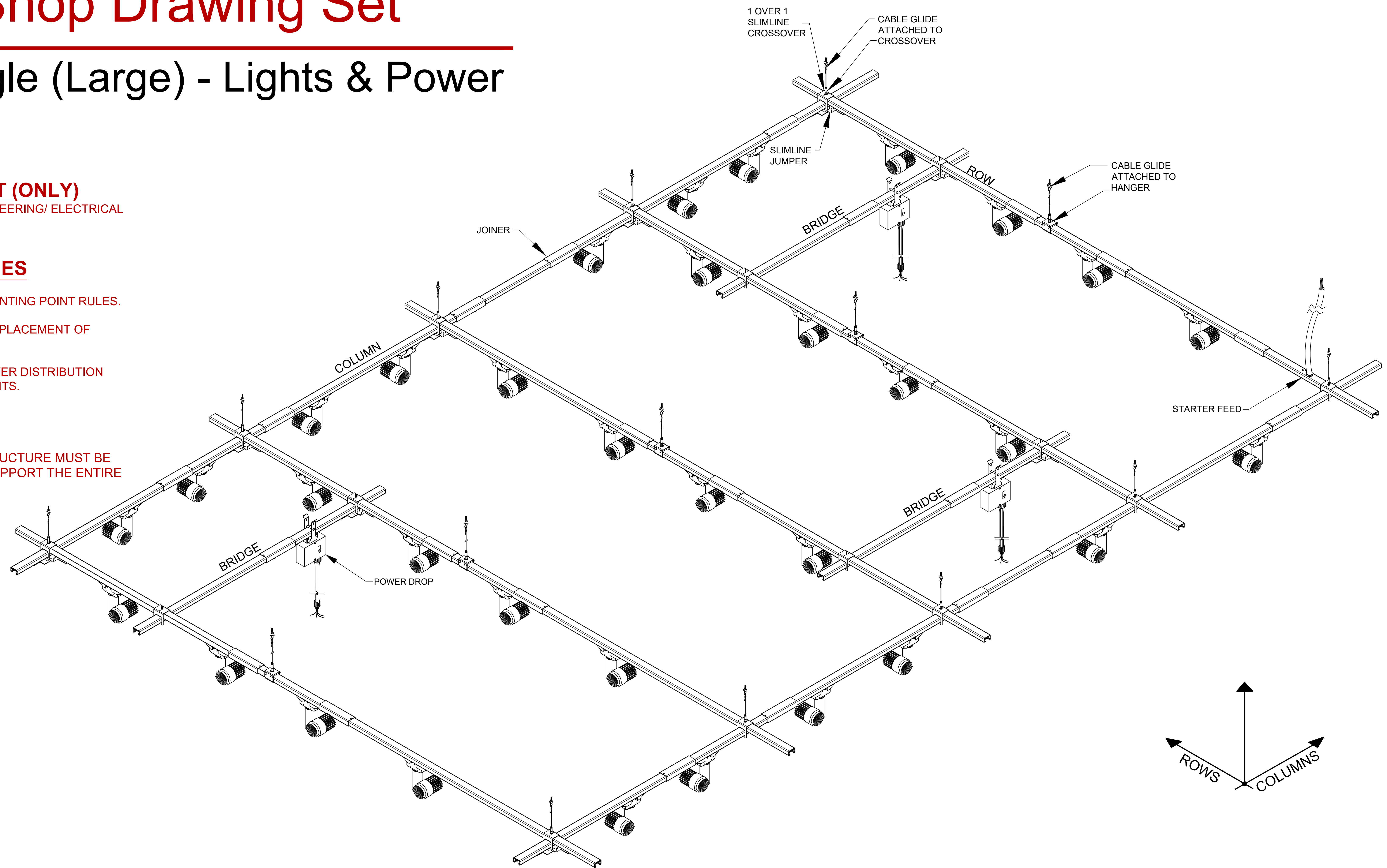
busSTRUT SHOP DRAWING SET (ONLY)
 NOT A REPLACEMENT FOR ARCHITECTURAL/ENGINEERING/ ELECTRICAL SPECIFICATIONS. (DEFER TO THEIR DRAWINGS)

CONTRACTOR RESPONSIBILITIES

- CONTRACTOR IS RESPONSIBLE FOR:
- 1.- FOLLOWING busSTRUT CONFIGURATION MOUNTING POINT RULES.
 - 2.- REFERRING TO ARCHITECTURAL PLANS FOR PLACEMENT OF LIGHTS.
 - 3.- REFERRING TO ELECTRICAL PLANS FOR POWER DISTRIBUTION AND ELECTRICAL CONNECTION REQUIREMENTS.

CONNECTION TO STRUCTURE

ATTACHMENT FROM busSTRUT SYSTEM TO STRUCTURE MUST BE ENGINEERED AND INSTALLED TO PROPERLY SUPPORT THE ENTIRE SUSPENDED WEIGHT.

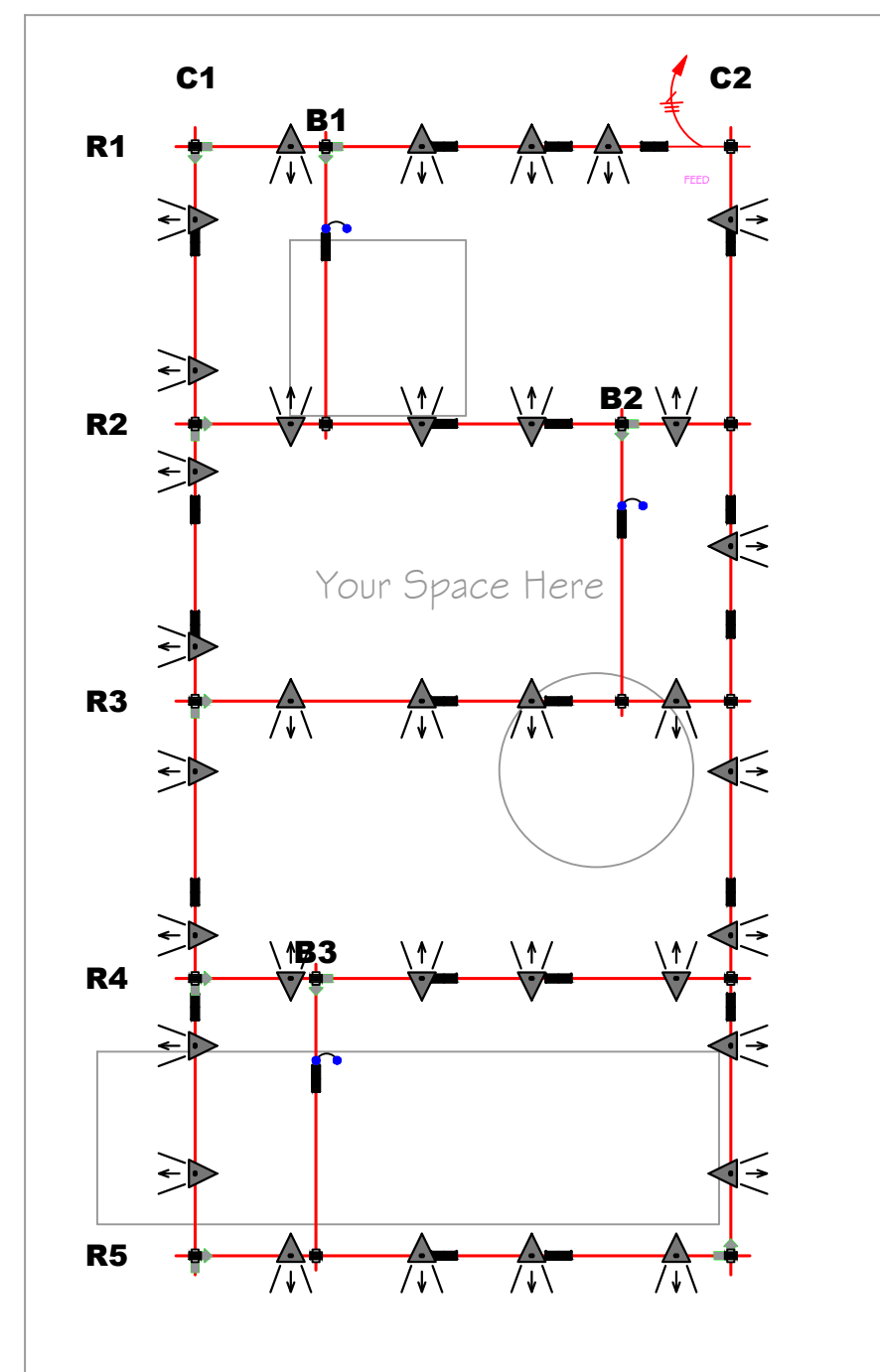


bs
busSTRUT
 805 Hillside Road
 Suite C
 Westerville, OH
 43081
 TEL: 614.933.8695
 E-MAIL: INFO@BUSSTRUT.COM
 WWW.BUSSTRUT.COM

DESIGNED BY: LARRY GELLERT
 CHECKED BY: JOHN LOCH
 DRAWN BY: JOHN LOCH
 DATE: 11/01/2024
 STATUS: BID/REVIEW

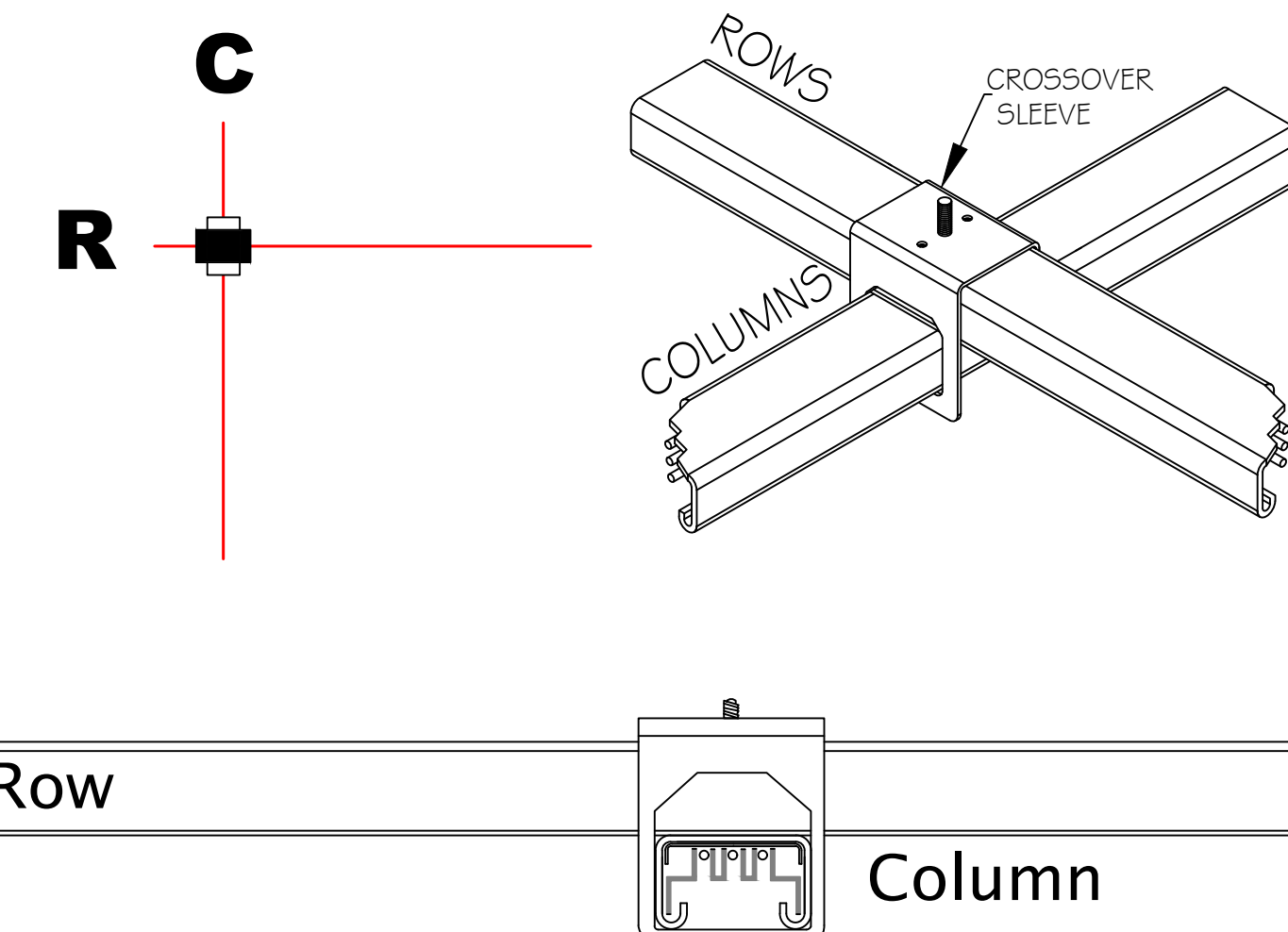
TABLE OF CONTENTS

E-b01 E-b02	Typical Installation Instructions
E-b1 E-b2	Lighting Plan, BOM, & Labor Hours Assembly Plan



KEY MOUNTING RULES

Rows are to be mounted on top of Columns.
 Crossover sleeve runs with Rows.



Legend

- busSTRUT 20 / Single Deck
- 30" Starter Feed
- Joiner
- 1/1 Slimline Crossover
- Slimline Jumper

APPROVAL

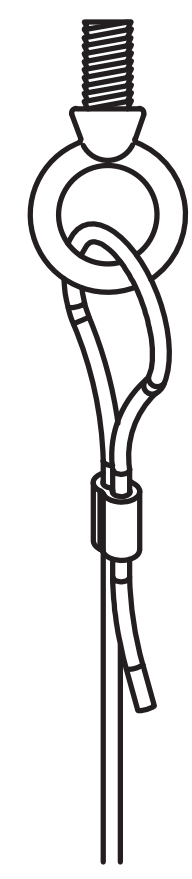
busSTRUT SHOP DRAWING SET (ONLY)
 NOT A REPLACEMENT FOR ARCHITECTURAL / ENGINEERING OR ELECTRICAL DRAWINGS

NO.	REV.	DATE	DESCRIPTION

PAPER SIZE: ARCH E (48x36)
 NOT TO SCALE
COVER SHEET

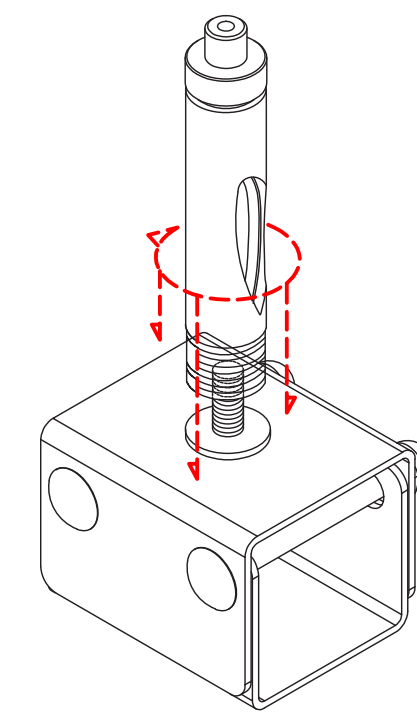
STEP 1

SUSPENDING busSTRUT



1 SUSPEND CABLES

(CG-XX)
ATTACH CABLE ASSEMBLY TO STRUCTURE
**It is the contractor and/or engineer's responsibility to determine correct connection to structure (beam clamp, etc).*

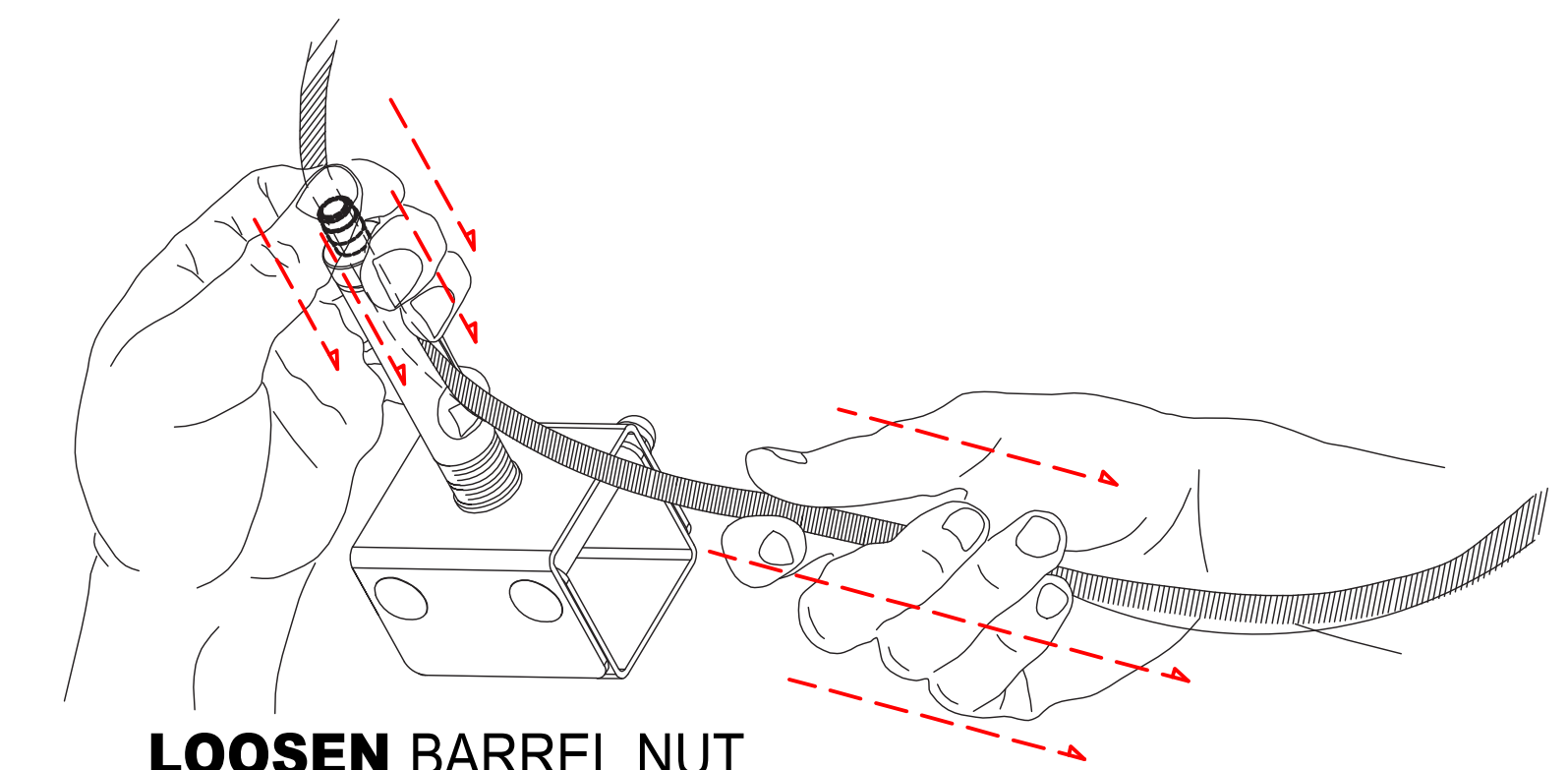
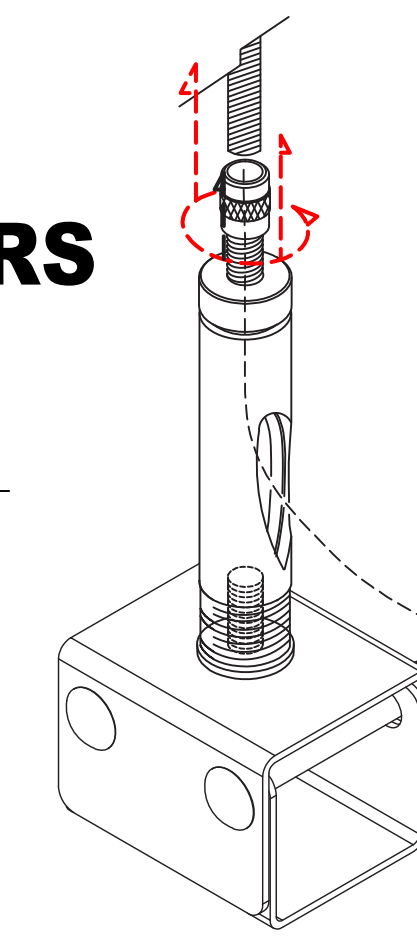


2 ASSEMBLE HANGERS

(HM-S)
ASSEMBLE HANGERS AND ATTACH CABLE GLIDE

3 ATTACH HANGERS TO CABLES

(CG-XX)
FEED CABLES THROUGH GLIDE TO ATTACH



LOOSEN BARREL NUT
PUSH CABLE THROUGH
PULL CABLE FOR SLACK

SLIDE busSTRUT THROUGH SUSPENDED HANGERS

Assemble
Create cable suspended runs of busSTRUT. Usually, these are running perpendicular to structural joists. Insert busSTRUT lengths through hangers/crossovers working from FINISHED HEIGHT.

FINISHED HEIGHT

**It is the contractor and/or engineer's responsibility to determine correct connection to structure (beam clamp, etc).*

LEVEL busSTRUT AND TRIM CABLE

FINISHED HEIGHT

CUT CABLE
Leave enough pass through cable for future leveling

BE SURE TO FOLLOW busSTRUT MOUNTING RULES (SEE busSTRUT shop drawings)

STEP 2

INSERT JOINERS

ATTACH JOINERS TO EACH END OF CONNECTING busSTRUT

JOINERS (M-JB)
Joiners are used to mechanically and electrically connect individual busSTRUT lengths.

TIGHTEN JOINERS

TIGHTEN SET SCREWS ON THE BOTTOM OF THE JOINER

Joiners require 3/32 Hex key for tightening set screws

ATTACH INSERT

ATTACH JOINERS TO EACH END OF CONNECTING busSTRUT

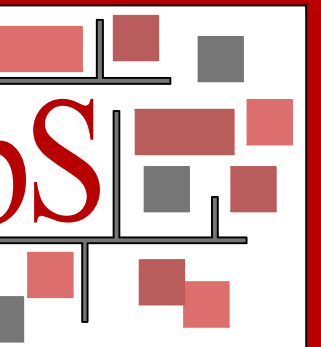
Line up center of insert with etched centerline on joiner sleeve

JOINER INSERT (M-JI-X)

A single piece unit that is installed with two knobs, one must be fully turned in each abutting length. As a result, power can continue to flow from one length to the next.

Turn the first knob
Squeeze tightly on the opposite side, then turn the second knob to secure the electrical connection.

**Installation Instruction Guidelines are provided only as that, informative guidelines. Defer to architectural/engineering drawings tailored to the specific project.



busSTRUT
805 Hilldowne Road
Suite C
Westerville, OH
43081
TEL: 614.933.8695
E-MAIL: INFO@BUSSTRUT.COM
WWW.BUSSTRUT.COM

DESIGNED BY
LARRY GELLERT
CHECKED BY
JOHN LOCH
DRAWN BY
JOHN LOCH
DATE
11/01/2024
REVISED FOR
BID/REVIEW

TYPICAL
busSTRUT Installation Instructions

busSTRUT SHOP DRAWING SET (ONLY)
NOT A REPLACEMENT FOR ARCHITECTURAL / ENGINEERING OR ELECTRICAL DRAWINGS

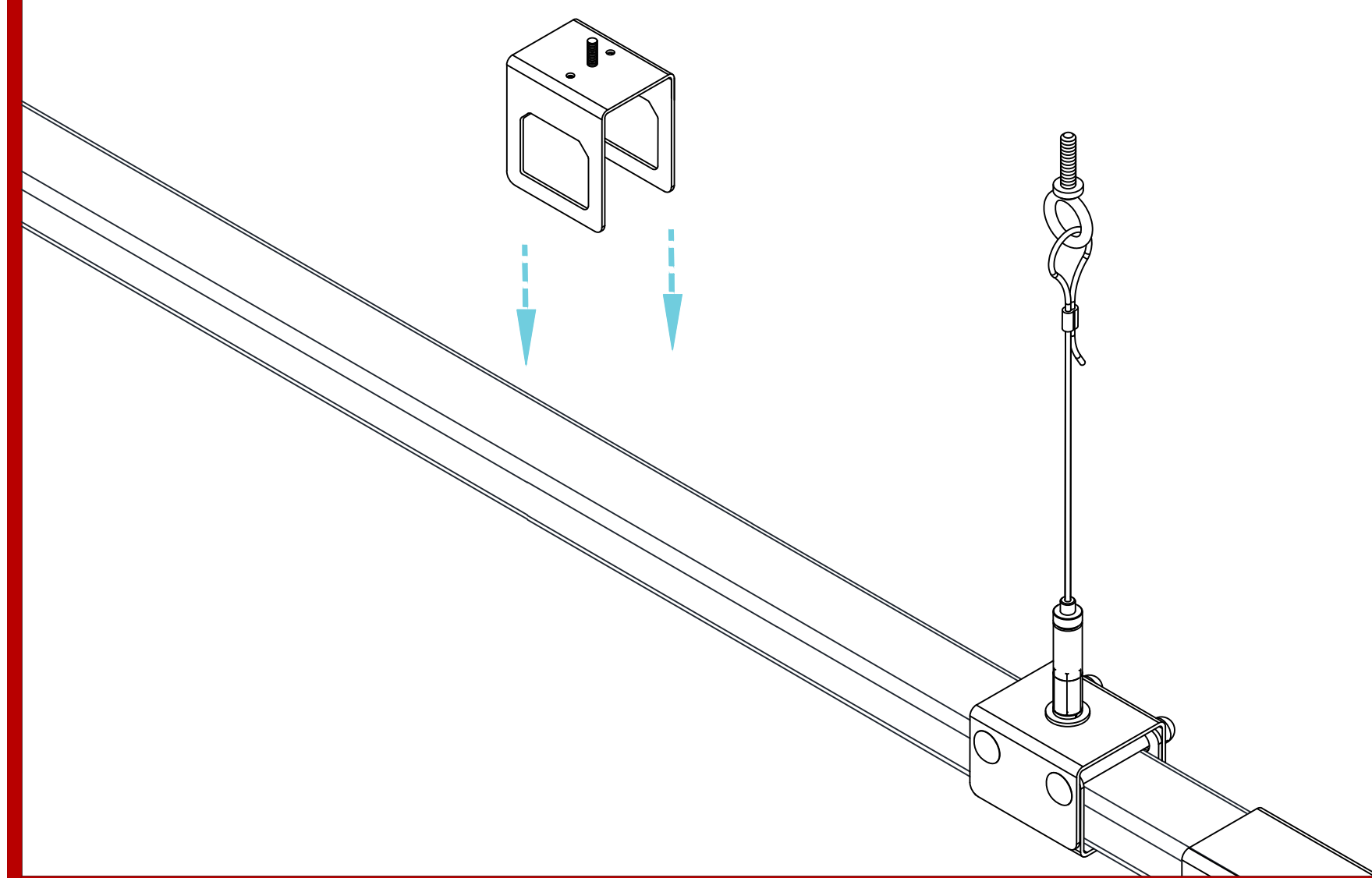
NO.	DATE	REVISION DESCRIPTION

PAPER SIZE:
ARCH E (48x36)
NOT TO SCALE
DRAWING NUMBER
E-b01

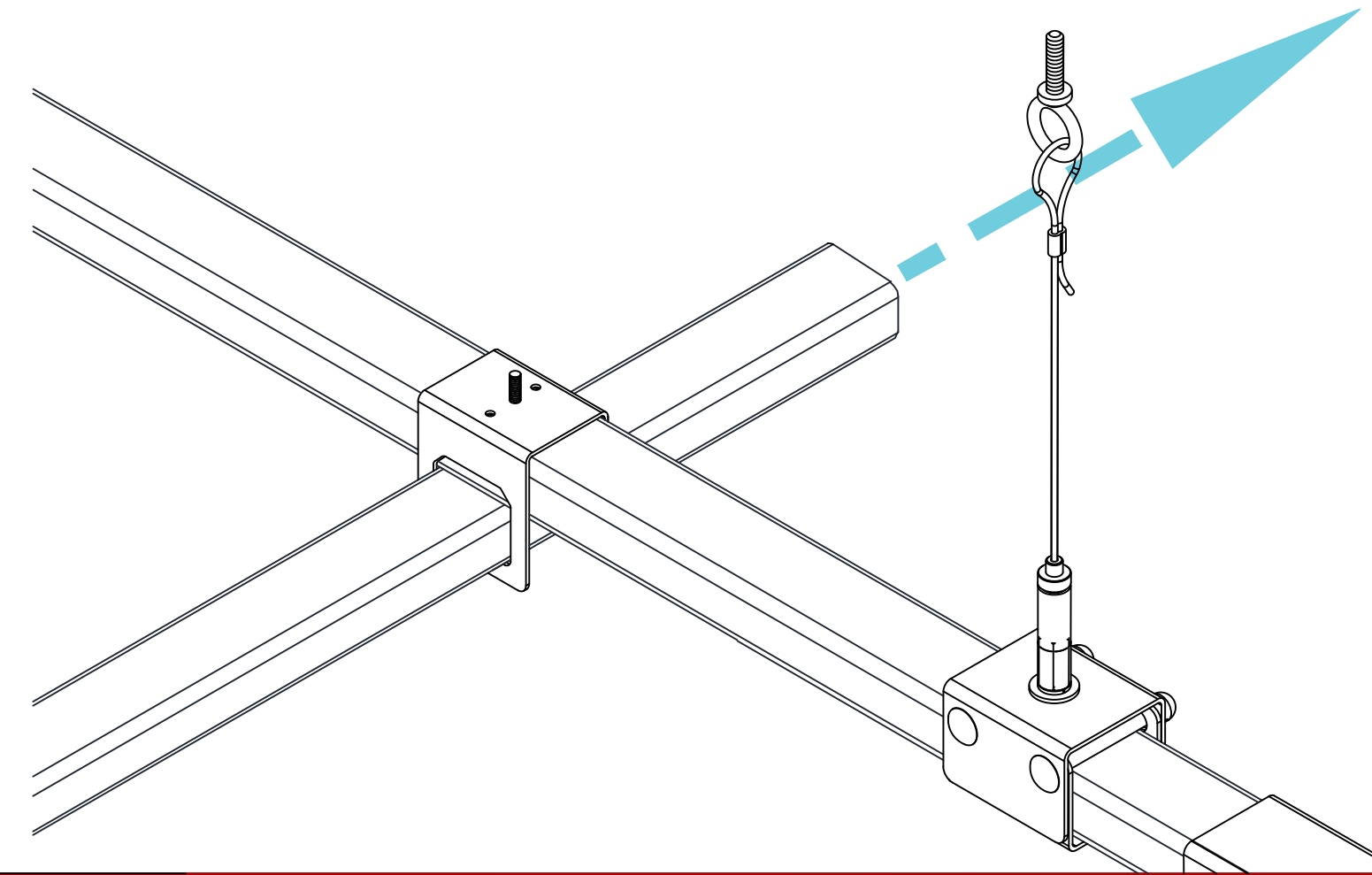
STEP 3

INSTALLING CROSSOVERS DROPPING ON

Crossovers can be dropped onto suspended busSTRUT to create an intersection with a perpendicular run of busSTRUT.

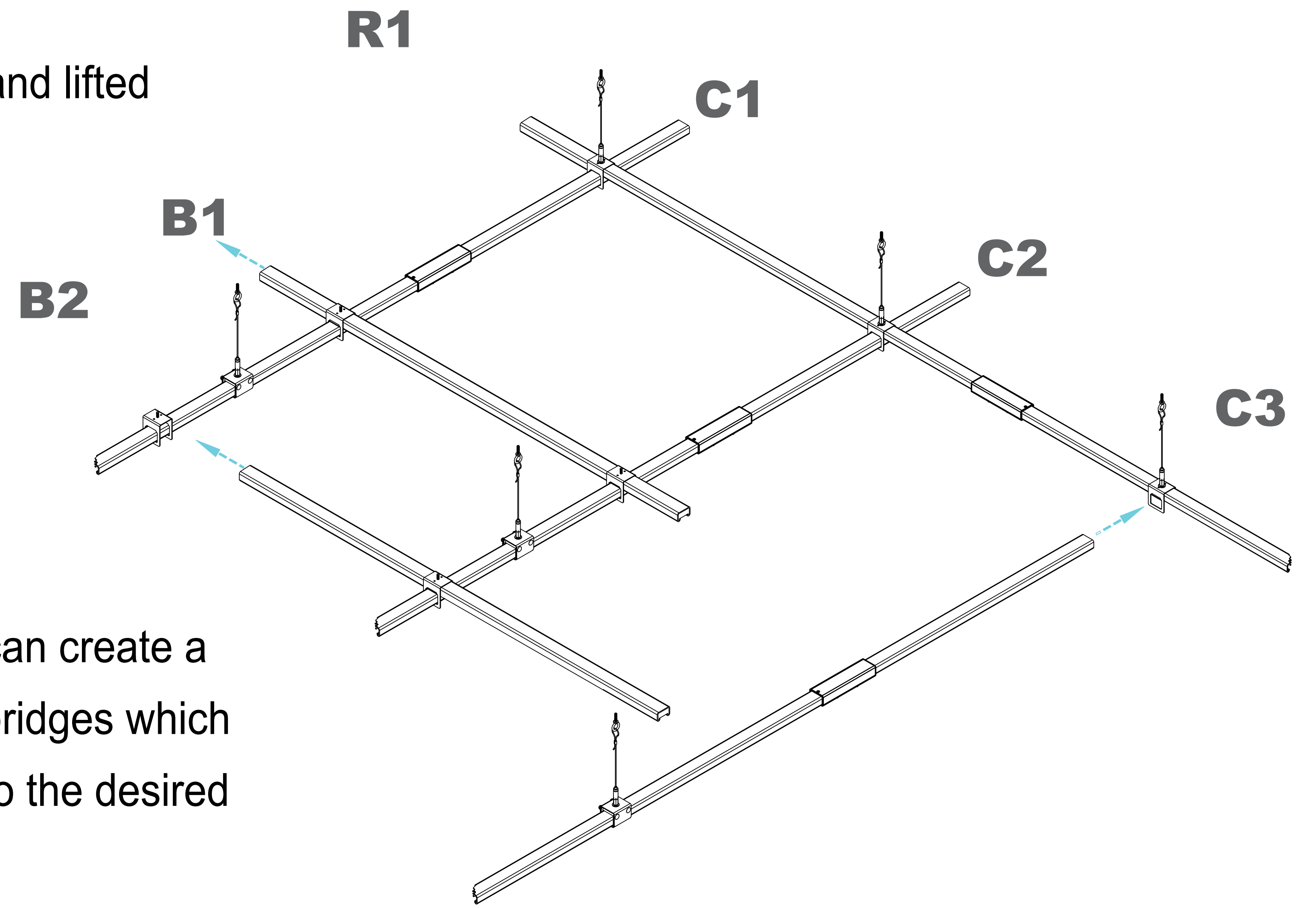


Slide perpendicular runs of busSTRUT through the crossover and tighten the set screws.



SLIDING ON

Crossovers can be slid into position and lifted to create perpendicular bridges.

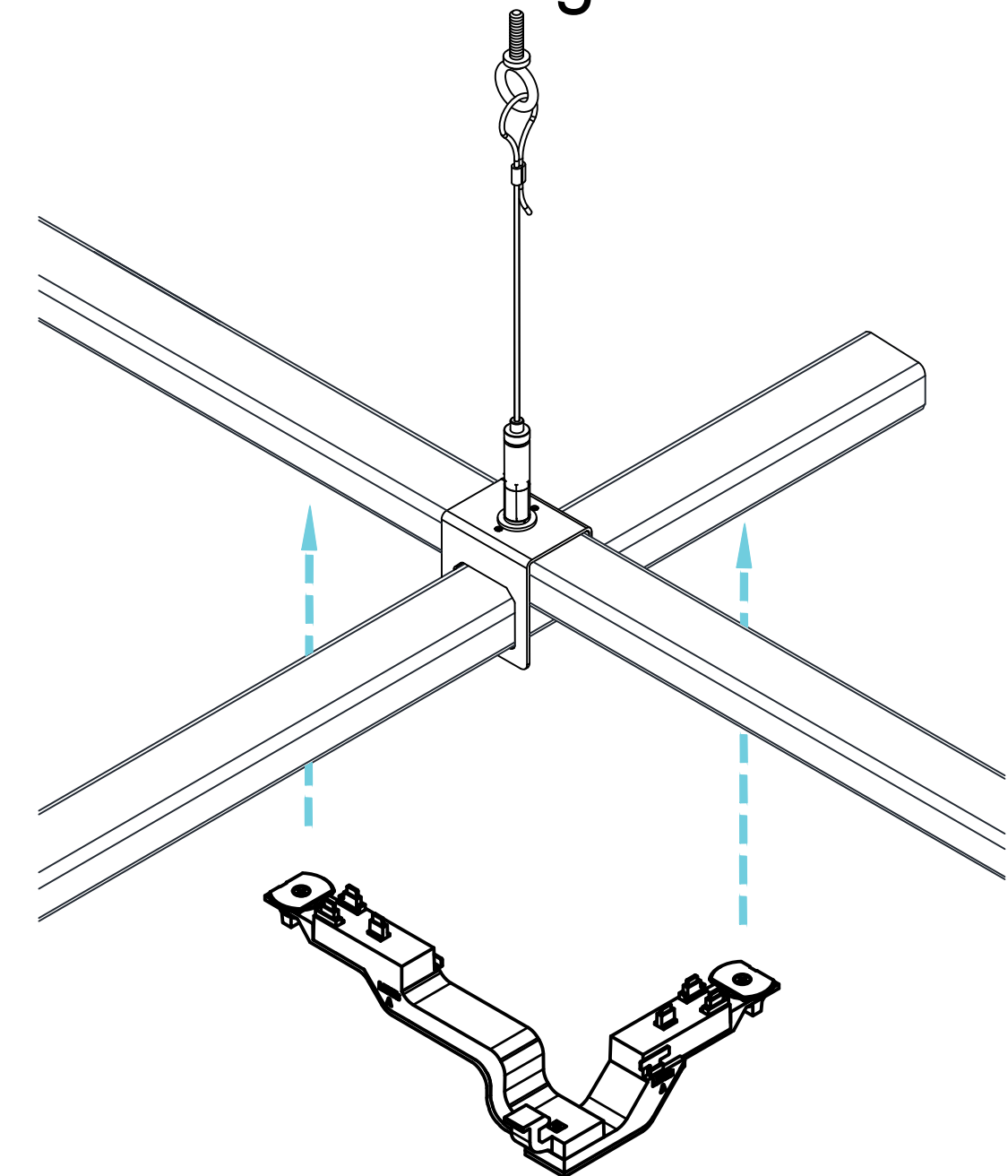


Perpendicular runs can create a full grid or be short bridges which are easily moved into the desired position.

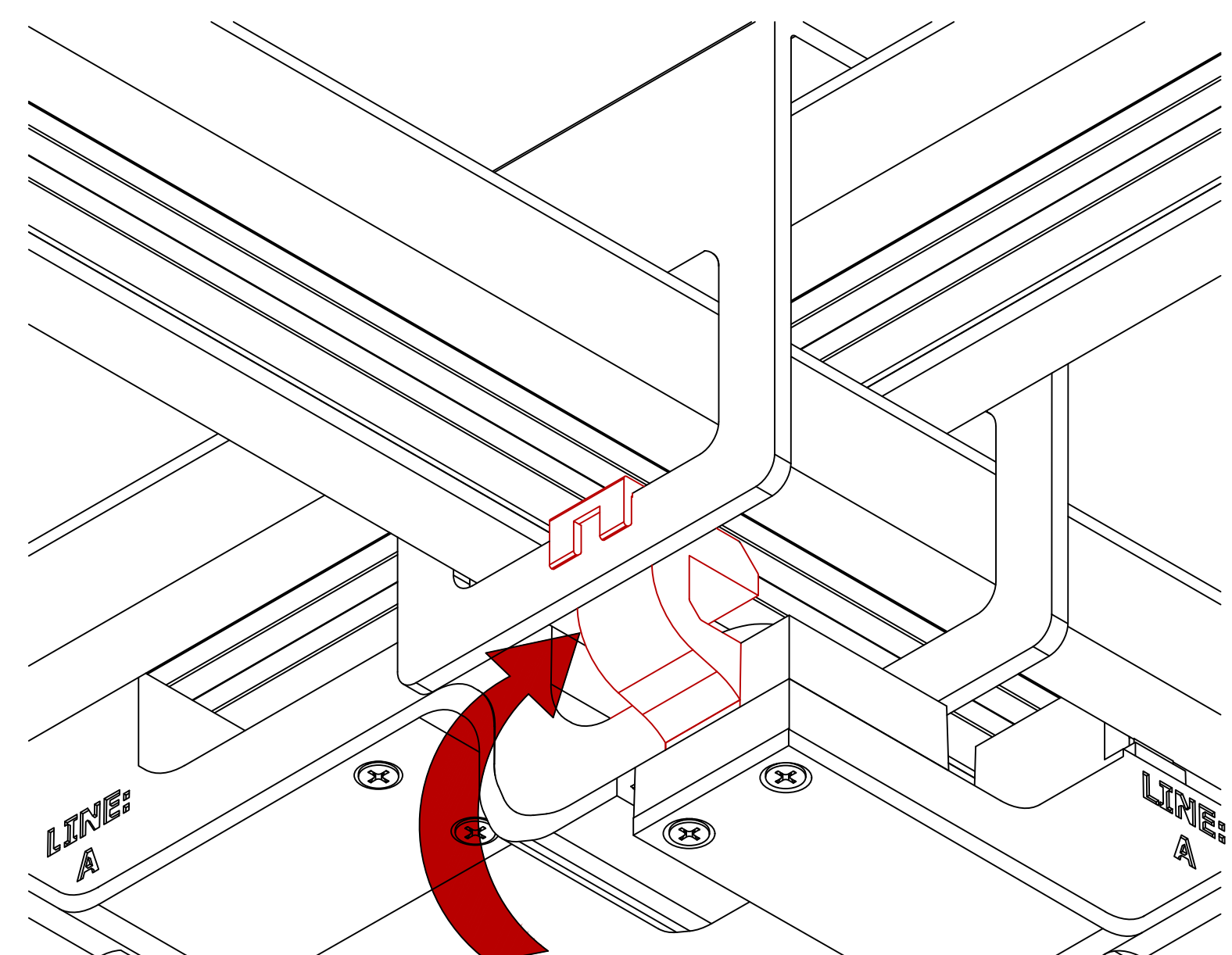
STEP 4A

SLIMLINE JUMPER

Make sure that the slimline crossover is tightened before attaching the slimline jumper.

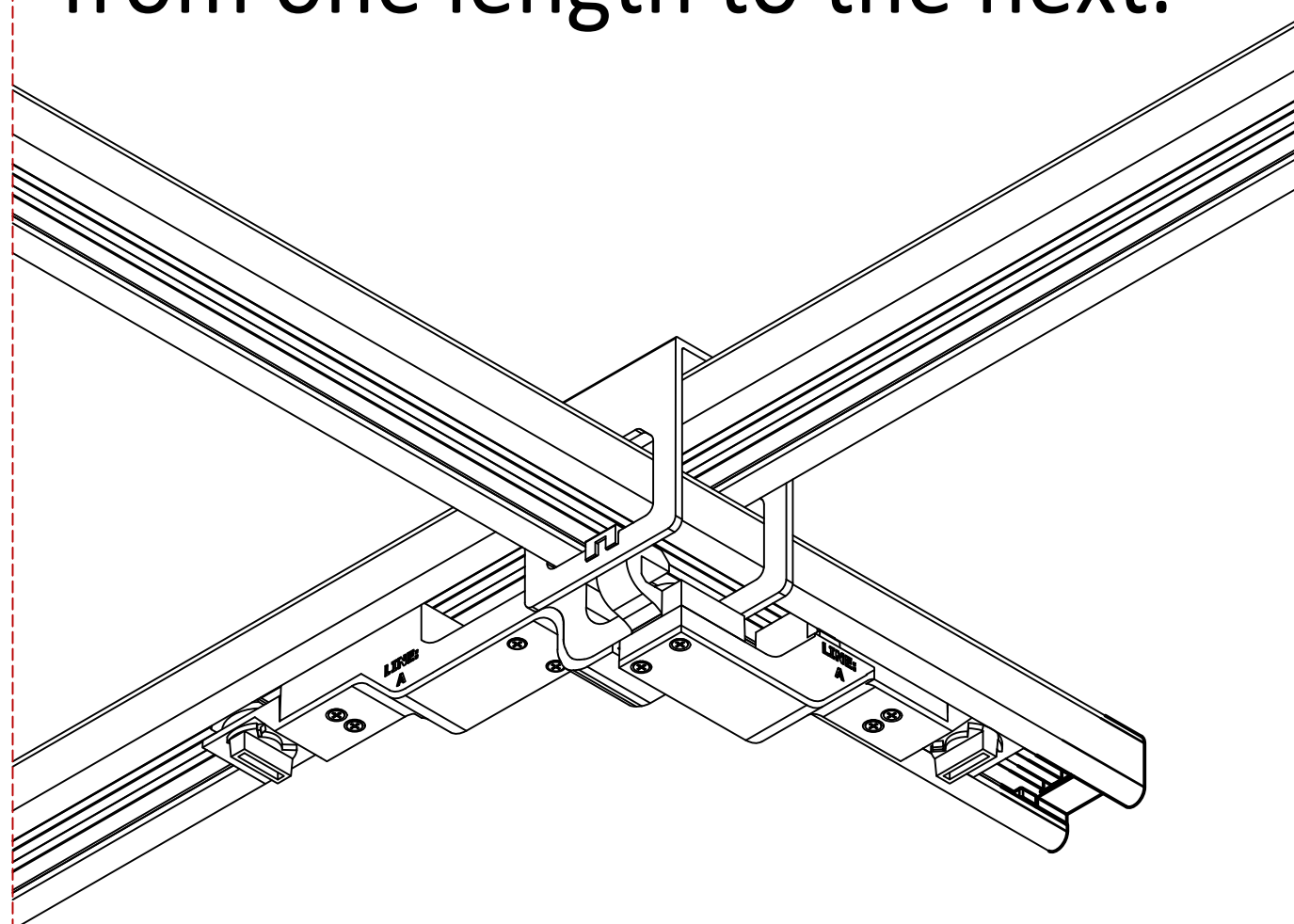


First, clip the jumper to the crossover.

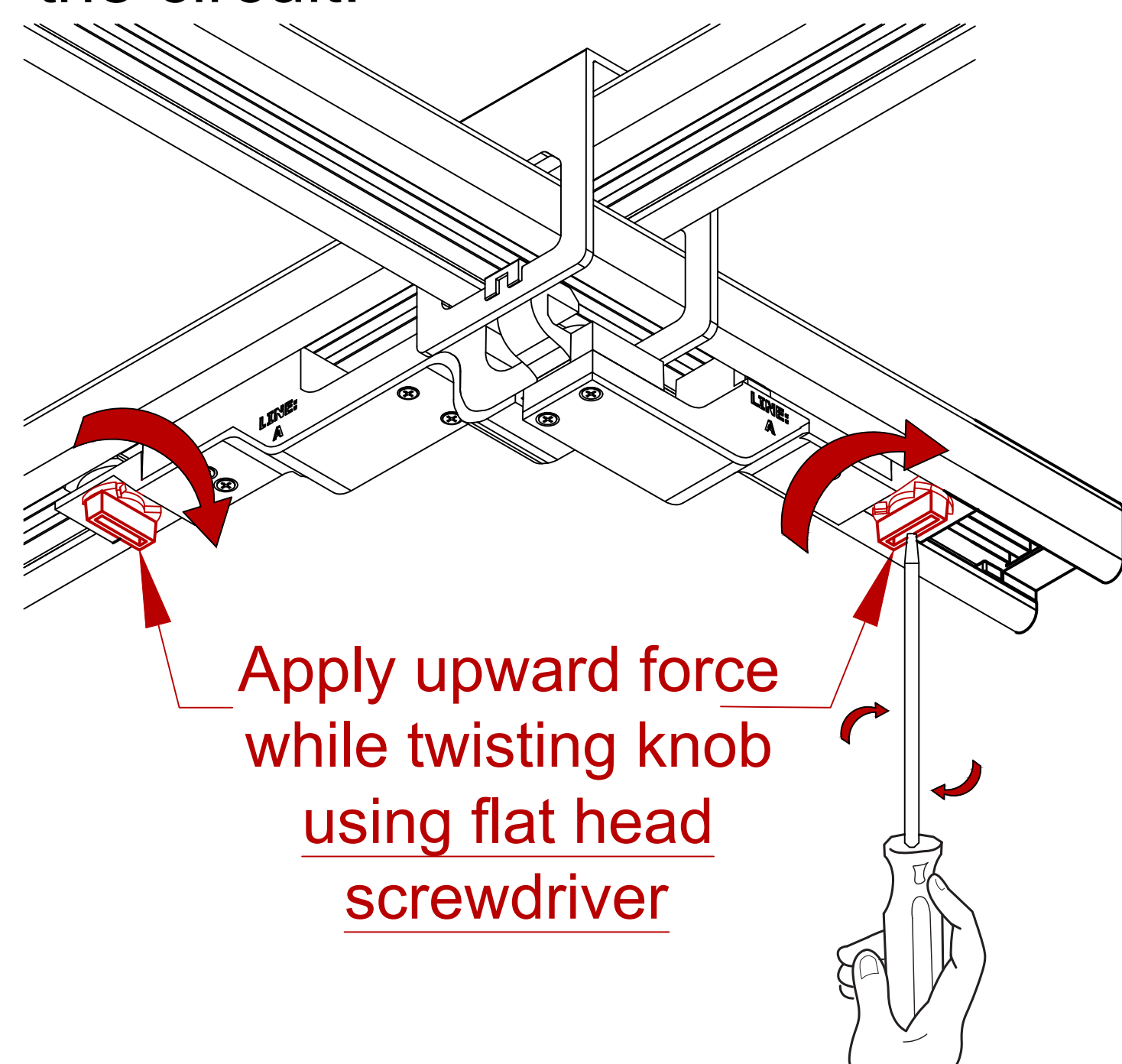


SLIMLINE JUMPER (MD2020-UNIV-IJ2-B-X)

A single piece unit that is installed with two knobs, one must be fully turned in each abutting length. As a result, power can continue to flow from one length to the next.



Seat the jumper into the busSTRUT by squeezing tightly on one side and turning the knob. Then, turn the other knob to complete the circuit.

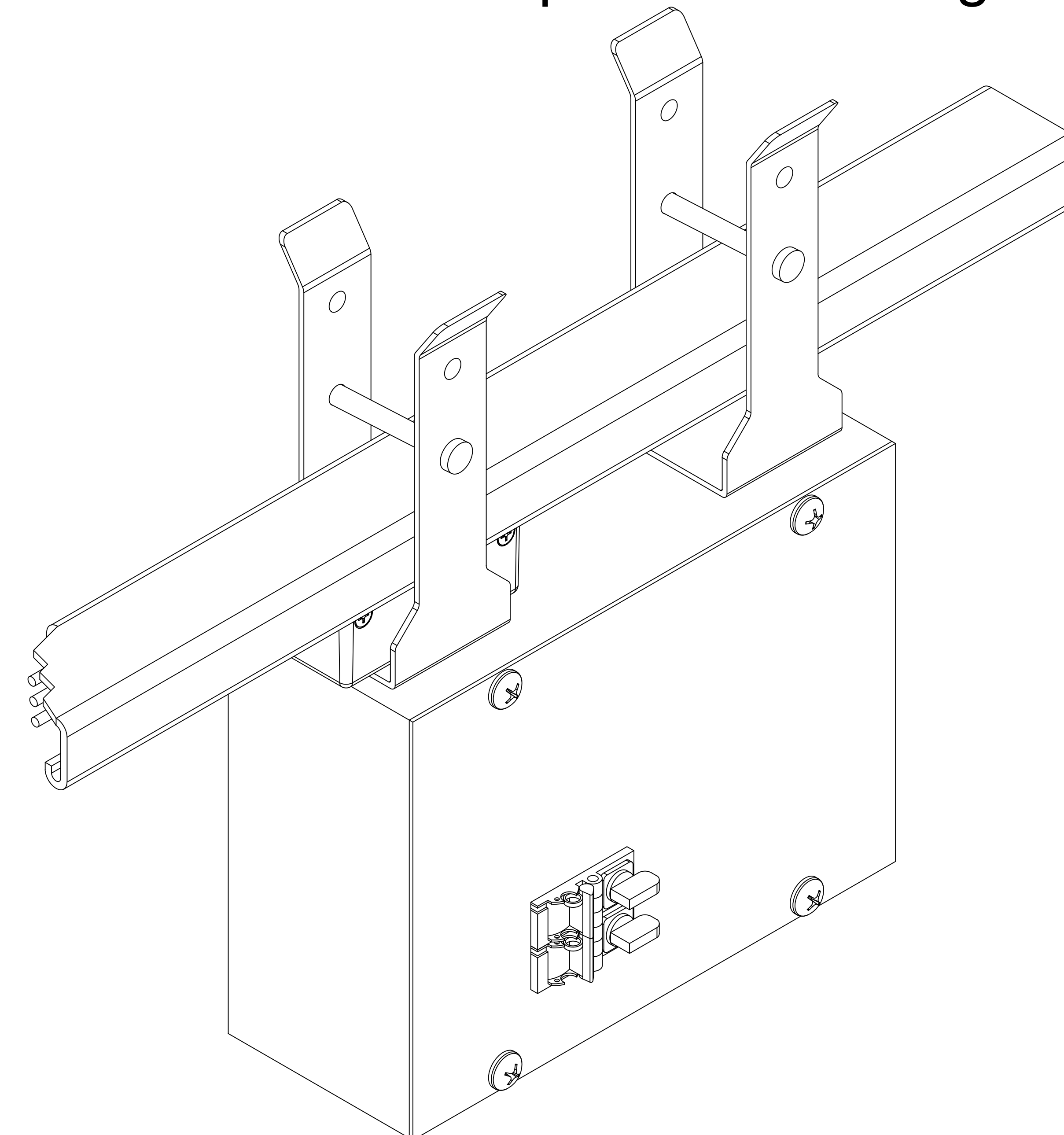


Apply upward force while twisting knob using flat head screwdriver

STEP 4B

LINE FEEDS

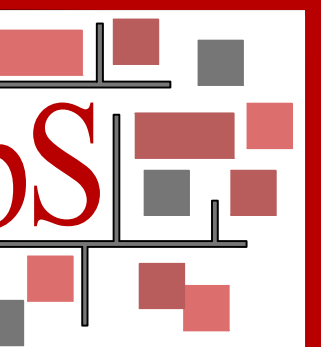
Install line feeds on busSTRUT to power the configuration.



20A LINE FEED

Shown on single decked busSTRUT

**Installation Instruction Guidelines are provided only as that, informative guidelines. Defer to architectural/engineering drawings tailored to the specific project.



busSTRUT
805 Hillside Road
Suite C
Westerville, OH
43081
TEL: 614.933.8695
E-MAIL: INFO@busSTRUT.COM
WWW.BUSSTRUT.COM

DESIGNED BY
LARRY GELLERT
CHECKED BY
JOHN LOCH
DRAWN BY
JOHN LOCH
DATE
11/01/2024
APPROVED FOR
BID/REVIEW

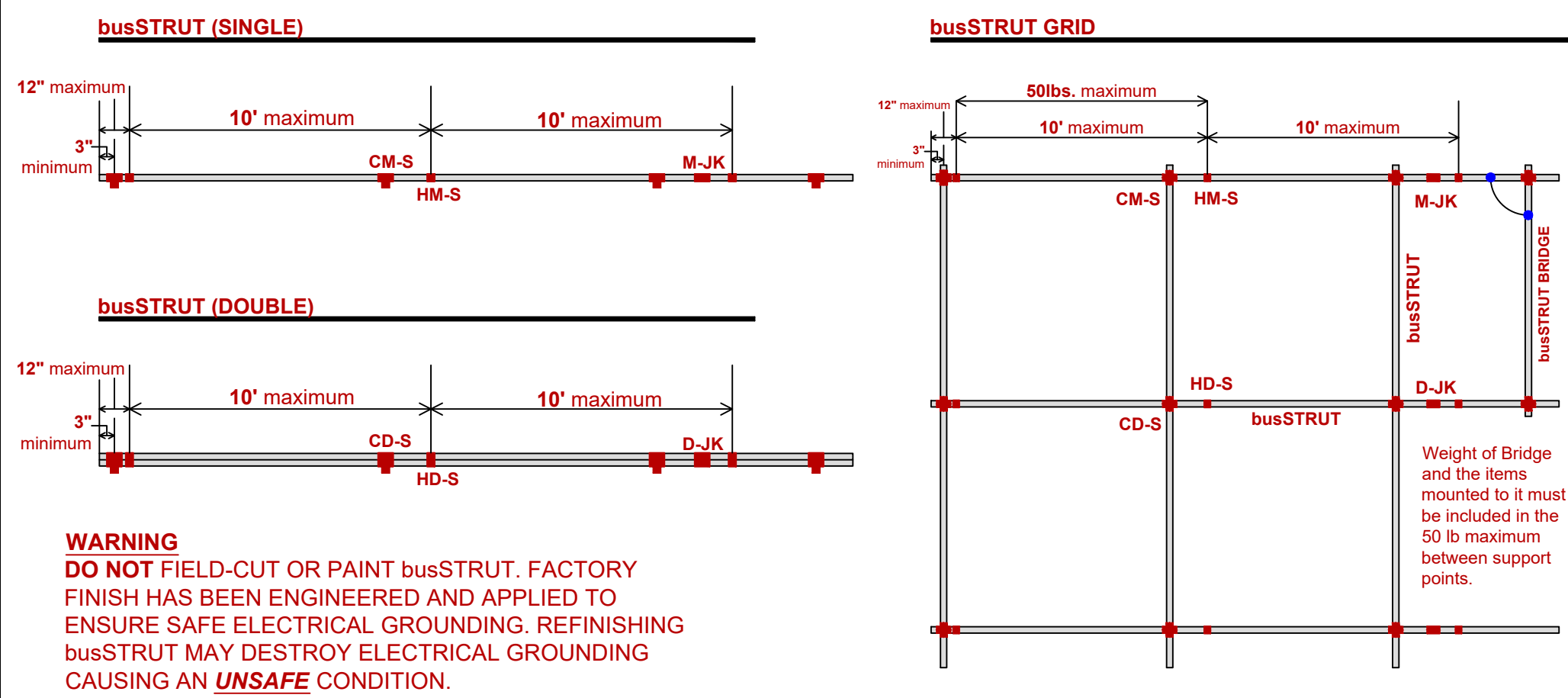
TYPICAL
busSTRUT Installation Instructions

busSTRUT
SHOP DRAWING SET(ONLY)
NOT A REPLACEMENT FOR
ARCHITECTURAL/
ENGINEERING OR ELECTRICAL
DRAWINGS

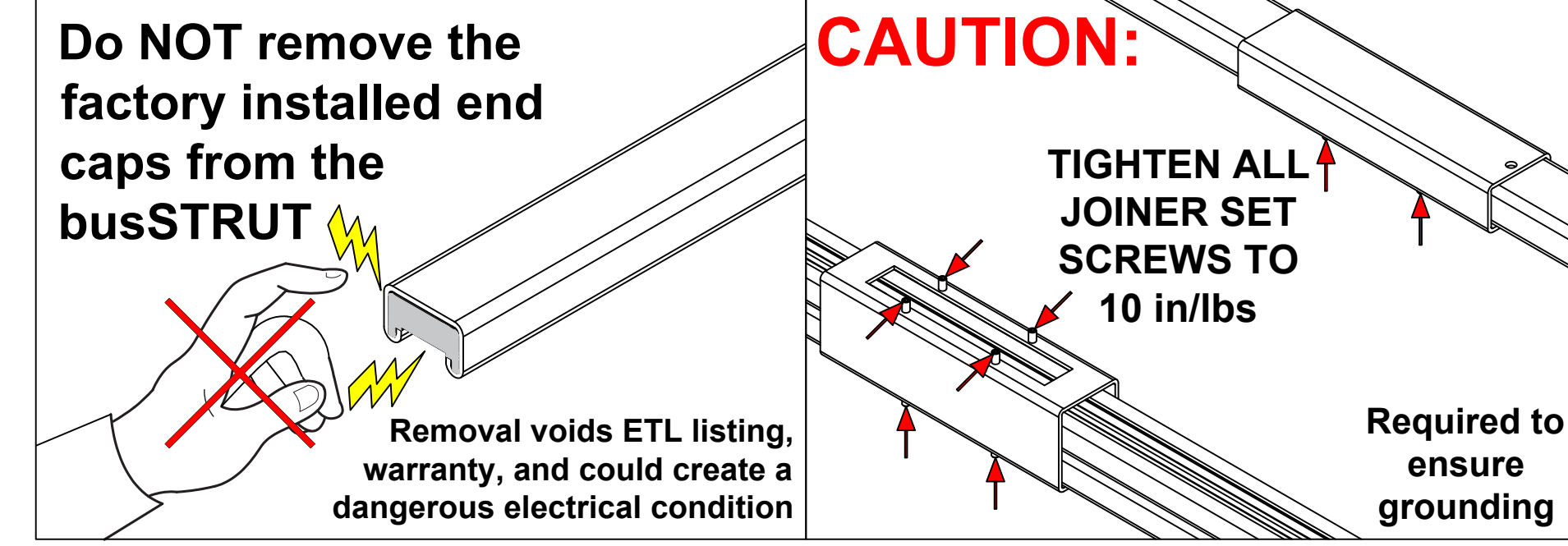
NO.	DATE	REV.	DESCRIPTION

PAPER SIZE:
ARCH E (48x36)
NOT TO SCALE
DRAWING NUMBER
E-b02

Mounting Rules



WARNING
 DO NOT FIELD-CUT OR PAINT busSTRUT. FACTORY FINISH HAS BEEN ENGINEERED AND APPLIED TO ENSURE SAFE ELECTRICAL GROUNDING. REFINISHING busSTRUT MAY DESTROY ELECTRICAL GROUNDING CAUSING AN UNSAFE CONDITION.



DISTANCE:
 10' MAXIMUM 10' spacing between support points

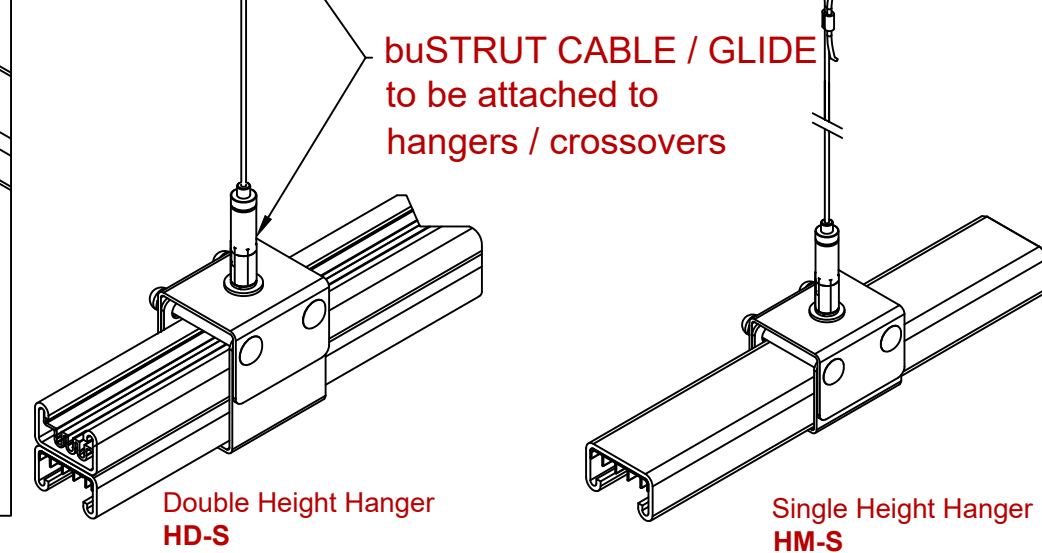
12" Support point must be within 12" from every end or corner

3" MINIMUM 3" of busSTRUT to be exposed beyond end of mounting hangers and/or crossovers

WEIGHT:
 50 lbs Maximum 50 pounds between support points (Include weight of busSTRUT System)
 Weight of 1 foot of busSTRUT:
 Single (MIN) - 1.5 lb per Linear Foot (not including connected weight)
 Double (MAX) - 3 lb per Linear Foot (not including connected weight)

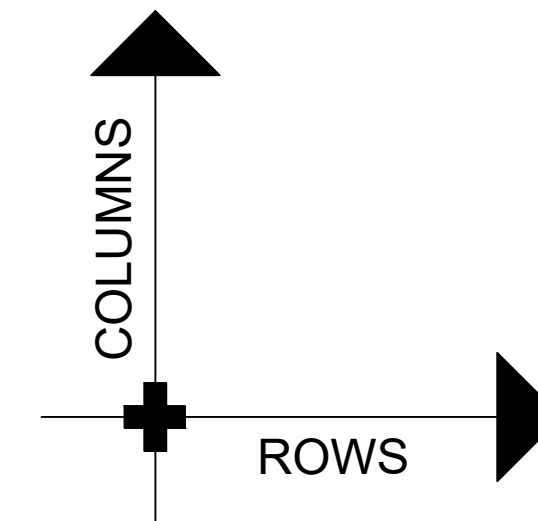
FITTERS
 40 lbs The busSTRUT Flip-Fitters (with metal bracket) are rated for 40 lbs maximum static, vertical load.
 Flip-Fitters without metal bracket are for use with standard track light fixtures only. Consult for maximum weight restrictions.

Only busSTRUT fittings and hardware may be mounted directly to busSTRUT.
CONNECTION TO STRUCTURE BY OTHERS
 Attachment from busSTRUT System to structure must be engineered and installed to properly support the entire suspended weight.

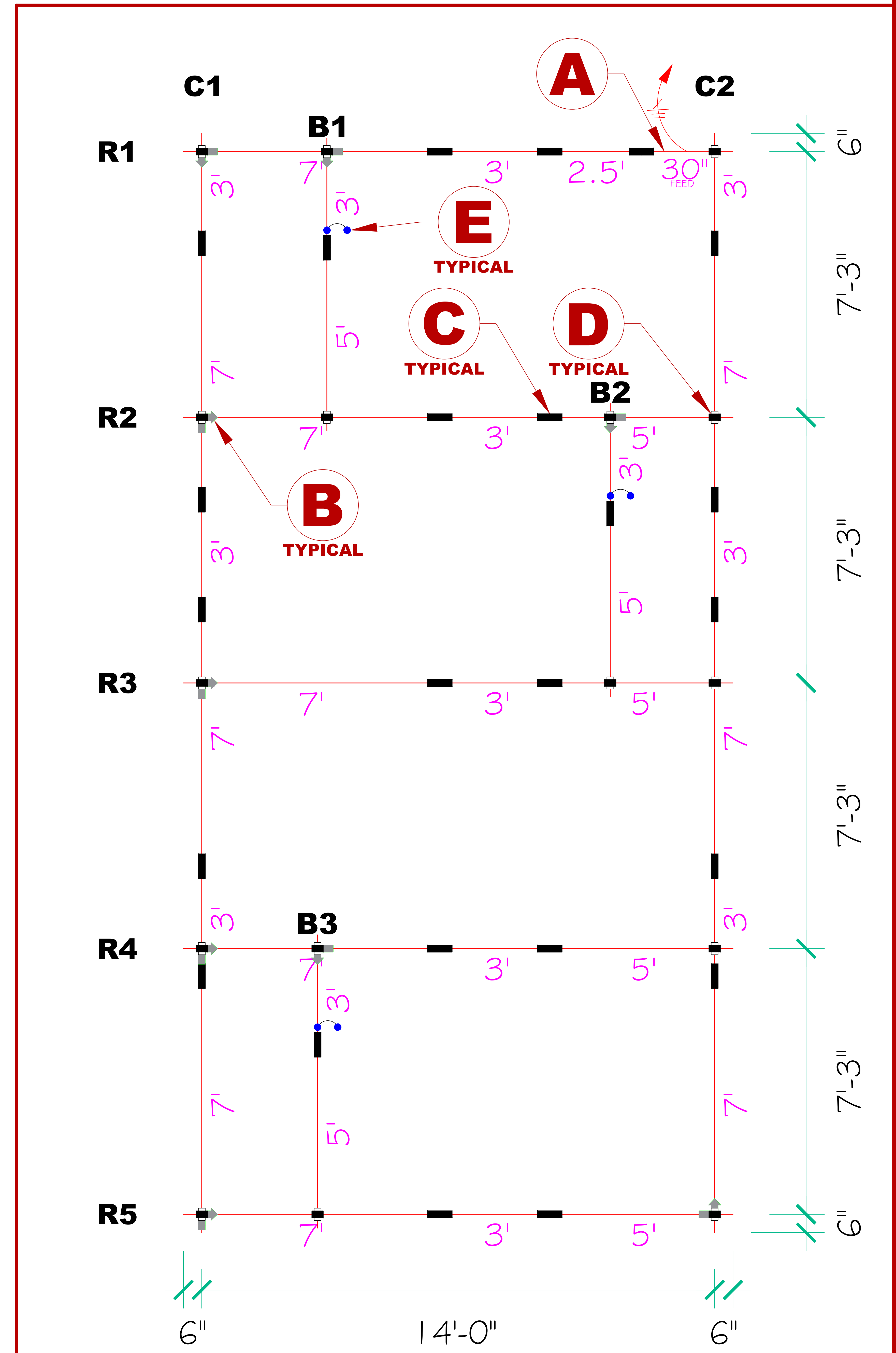


Legend

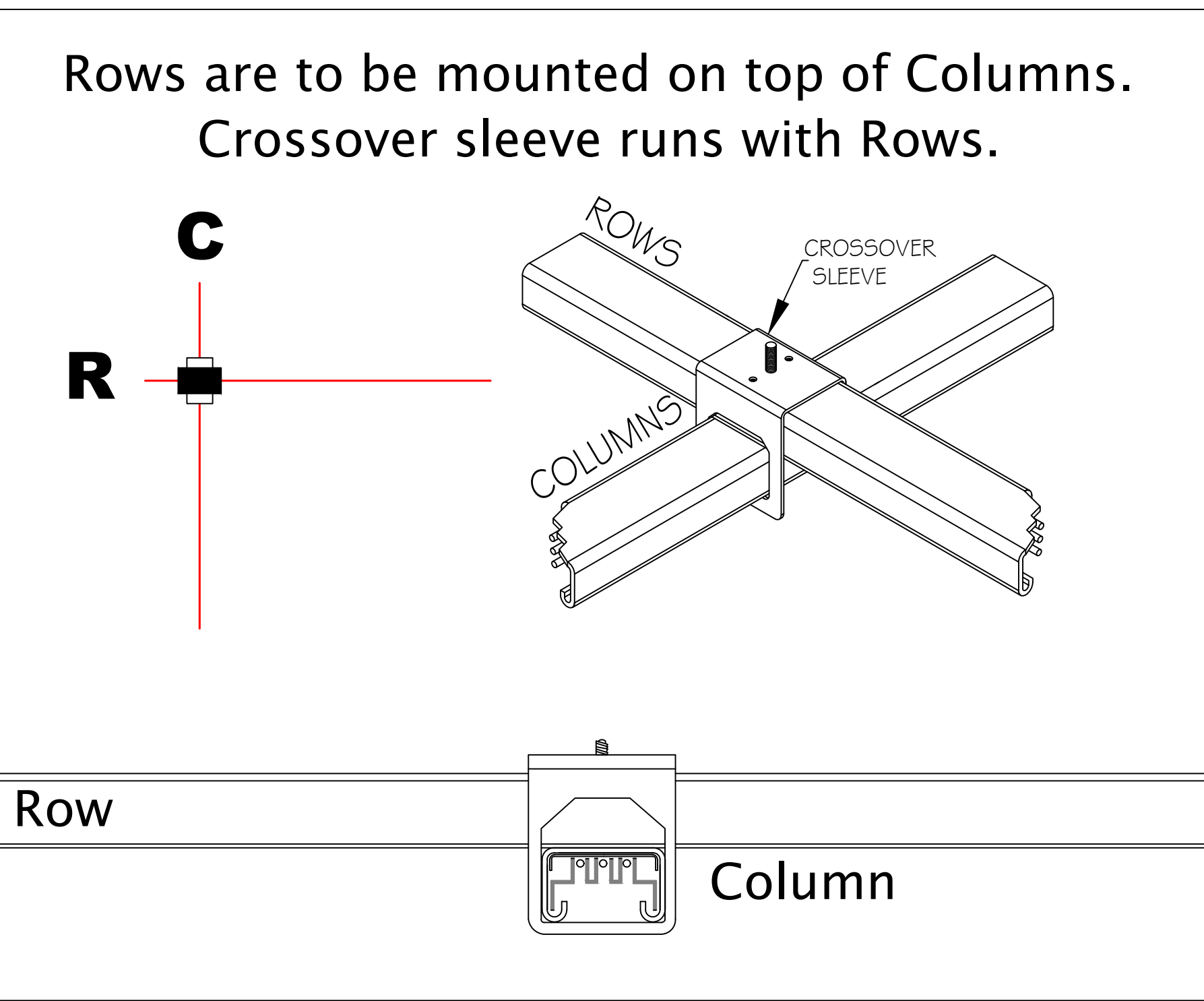
	busSTRUT 20 / Single Deck
	30" Starter Feed
	Joiner
	1/1 Slimline Crossover
	Slimline Jumper



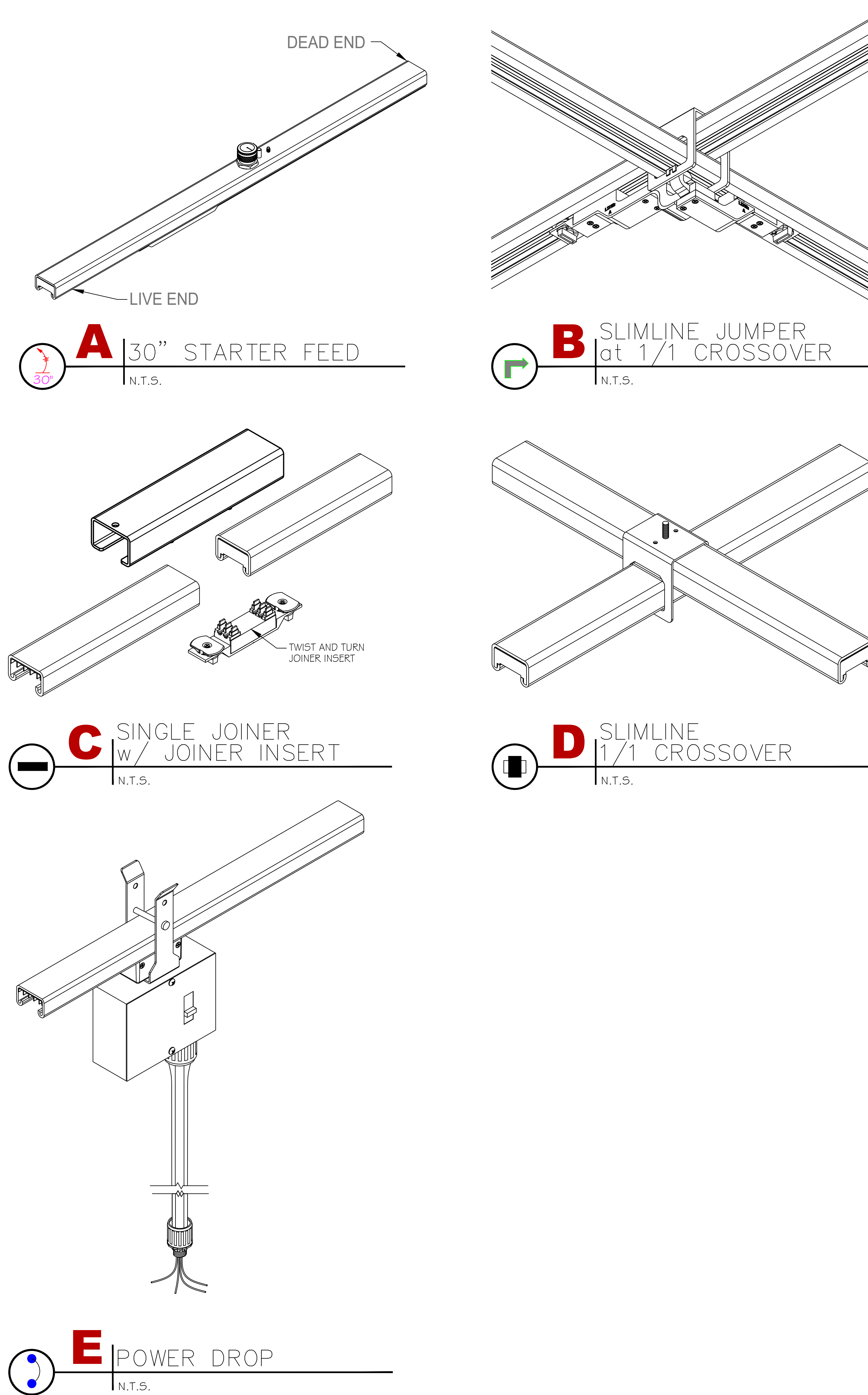
Dimensions



Project Specific Rules

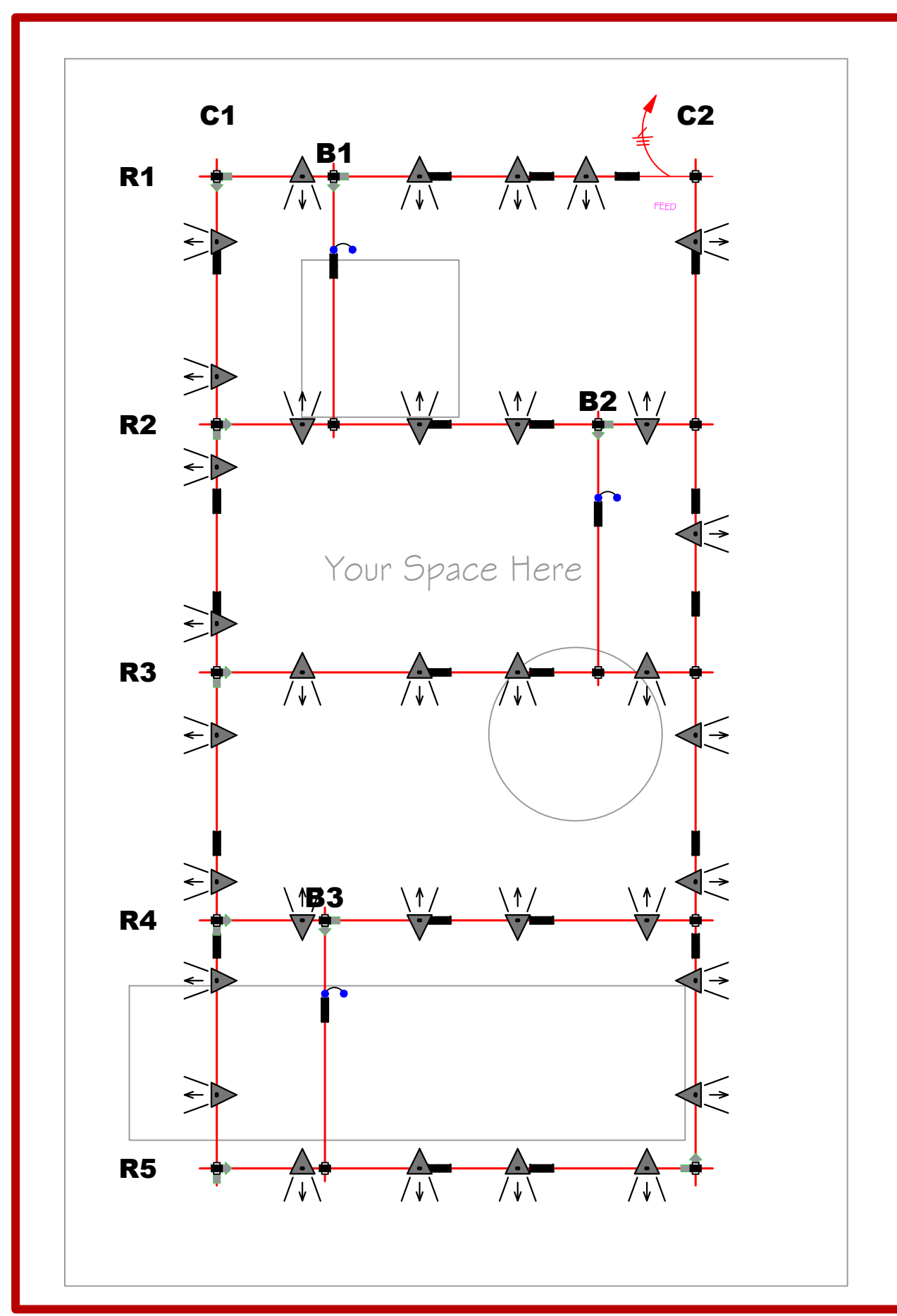


ISO Details



busSTRUT Lengths Used in this Project

- 2.5'
- 3'
- 5'
- 7'



Assembly Plan
 Rectangle Large - Lights & Power Drops

busSTRUT DRAWING SET (ONLY) STOP HERE! NO PROCEED TO ARCHITECTURAL ENGINEERING OR ELECTRICAL DRAWINGS

NO.	DATE	REVISION DESCRIPTION	BY

PAPER SIZE: ARCH E (48x36)
 SCALE 3/4" = 1'-0"
 DRAWING NUMBER E-b2

busSTRUT
 805 Hillside Road
 Suite C
 Westerville, OH 43081
 TEL: 614-933-8695
 E-MAIL: INFO@BUSSTRUT.COM
 WWW.BUSSTRUT.COM

DESIGNED BY: LARRY GELLERT
 CHECKED BY: JOHN LOCH
 DRAWN BY: JOHN LOCH
 DATE: 11/01/2024
 PROJECT: BID/REVIEW