

busSTRUT Shop Drawing Set

Express Rectangle (Large) - Lights

busSTRUT SHOP DRAWING SET (ONLY)

NOT A REPLACEMENT FOR ARCHITECTURAL/ENGINEERING/ ELECTRICAL SPECIFICATIONS. (DEFER TO THEIR DRAWINGS)

CONTRACTOR RESPONSIBILITIES

CONTRACTOR IS RESPONSIBLE FOR:

- 1.- FOLLOWING busSTRUT CONFIGURATION MOUNTING POINT RULES.
- 2.- REFERRING TO ARCHITECTURAL PLANS FOR PLACEMENT OF LIGHTS.
- 3.- REFERRING TO ELECTRICAL PLANS FOR POWER DISTRIBUTION AND ELECTRICAL CONNECTION REQUIREMENTS.

CONNECTION TO STRUCTURE

ATTACHMENT FROM busSTRUT SYSTEM TO STRUCTURE MUST BE ENGINEERED AND INSTALLED TO PROPERLY SUPPORT THE ENTIRE SUSPENDED WEIGHT.

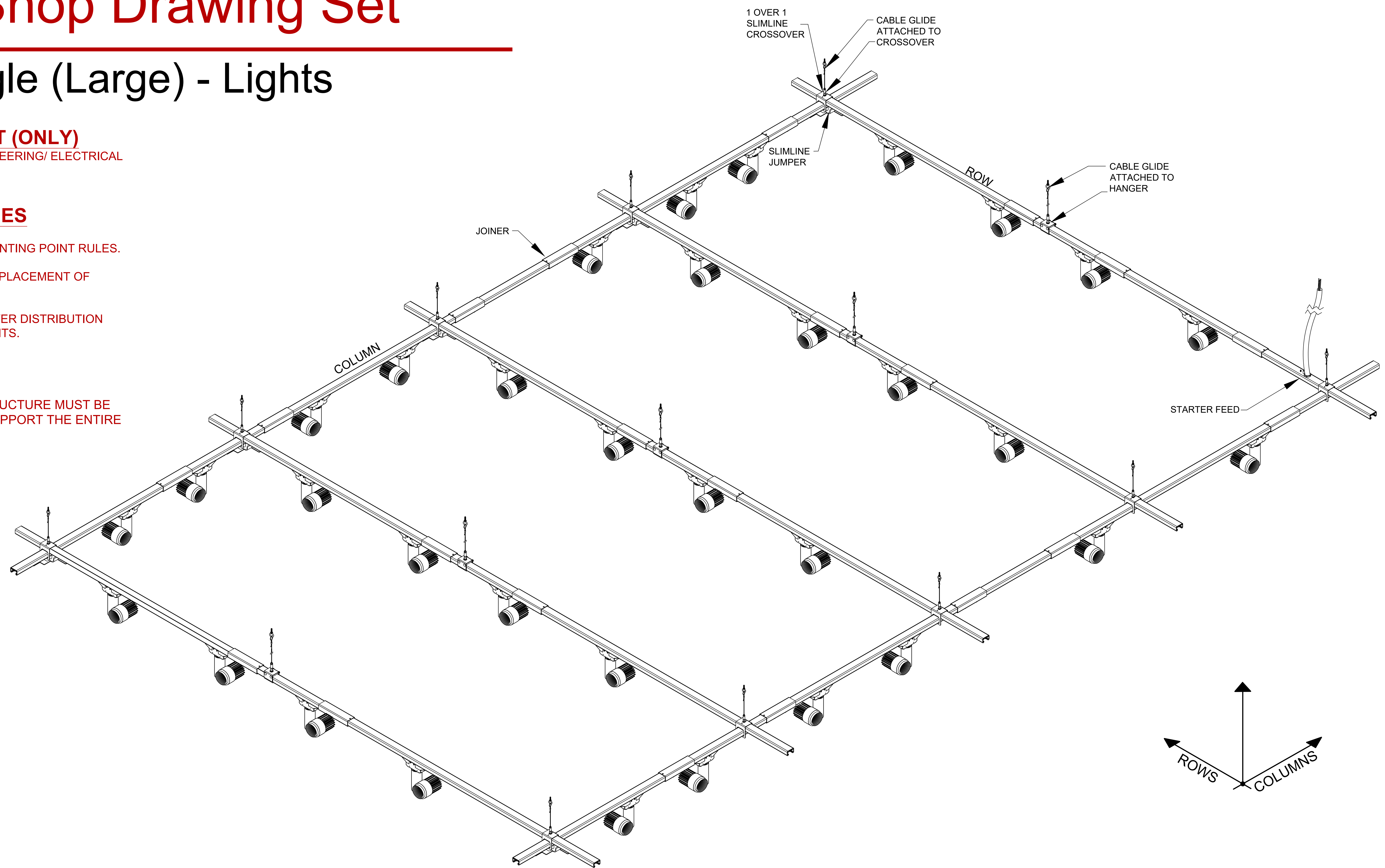
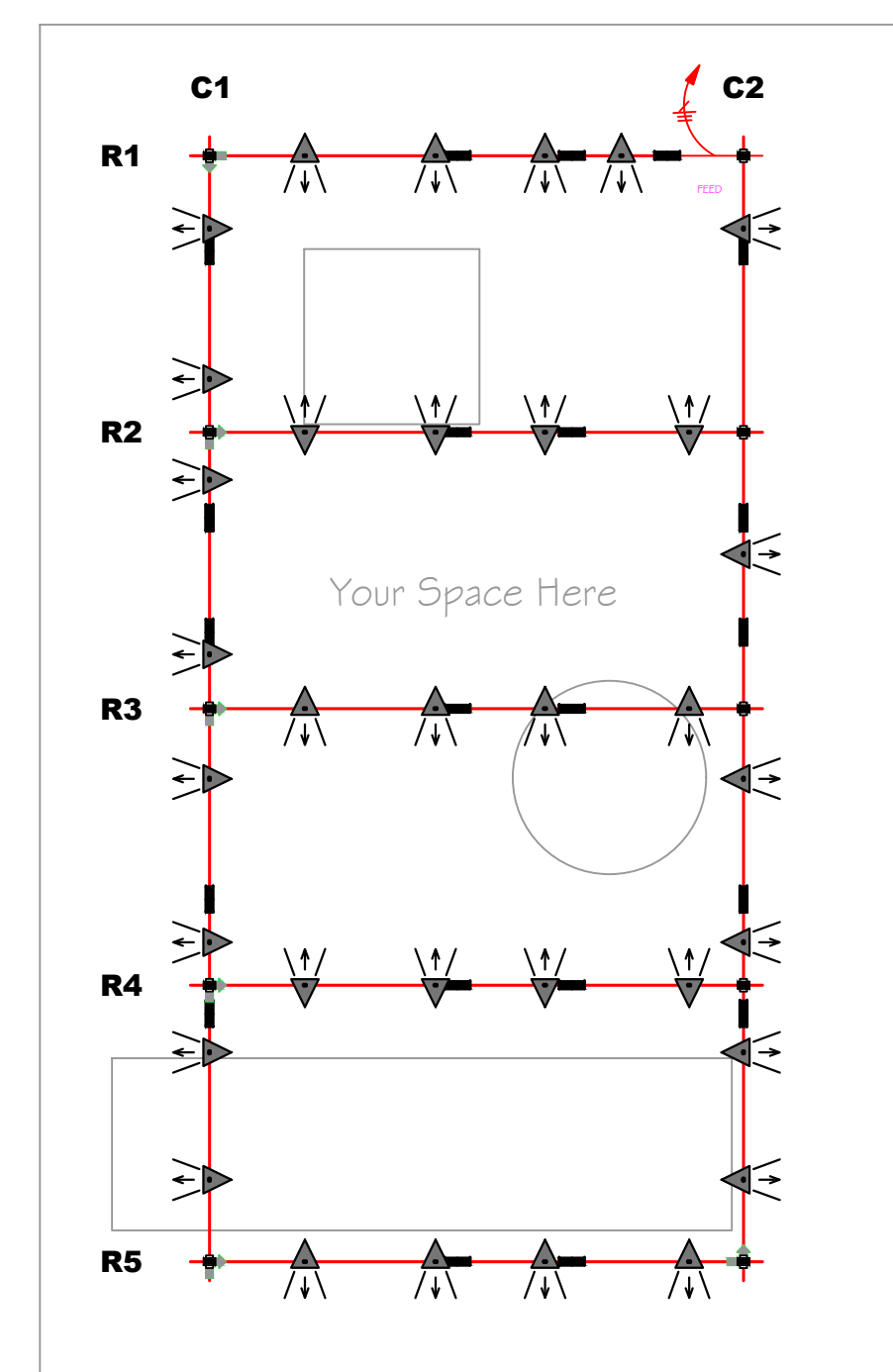


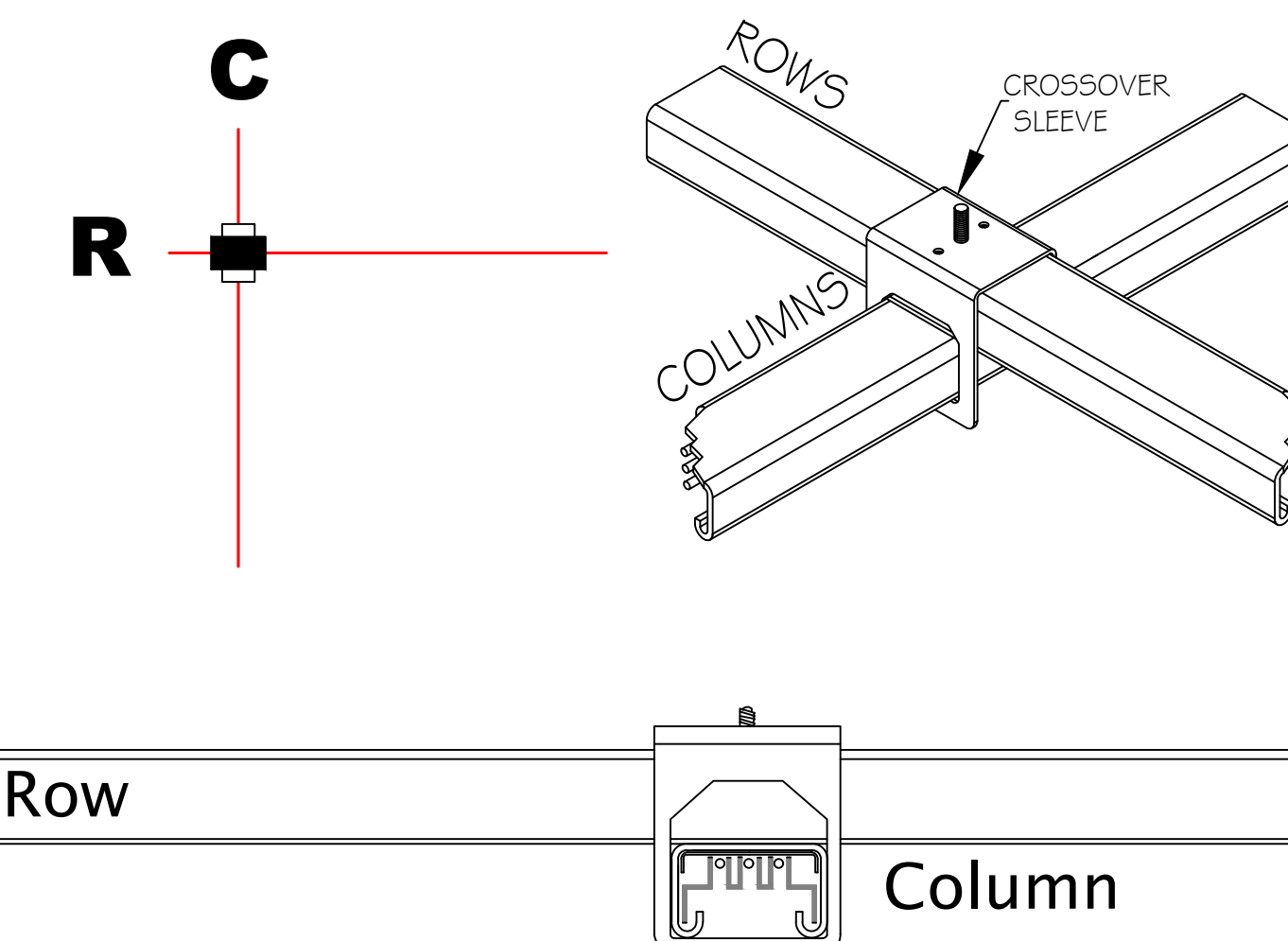
TABLE OF CONTENTS

<p>E-b01 E-b02</p>	<p>Typical Installation Instructions</p>
<p>E-b1 E-b2</p>	<p>Lighting Plan, BOM, & Labor Hours Assembly Plan</p>



KEY MOUNTING RULES

Rows are to be mounted on top of Columns.
Crossover sleeve runs with Rows.



Legend

- busSTRUT 20 / Single Deck
- 30" Starter Feed
- Joiner
- 1/1 Slimline Crossover
- Slimline Jumper

APPROVAL

busSTRUT SHOP DRAWING SET (ONLY)
NOT A REPLACEMENT FOR
ARCHITECTURAL /
ENGINEERING OR ELECTRICAL
DRAWINGS

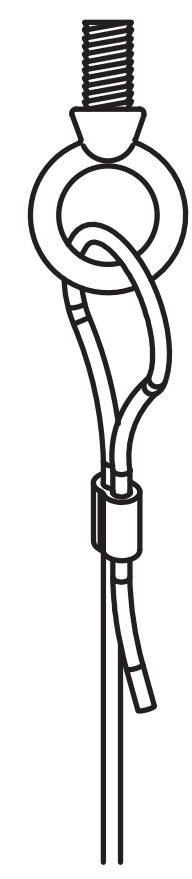
XX	BT
XXXX	REGION DESCRIPTION
XX-XX-XX	DATE
XX	NO.

PAPER SIZE:
ARCH E (48x36)
NOT TO SCALE

COVER SHEET

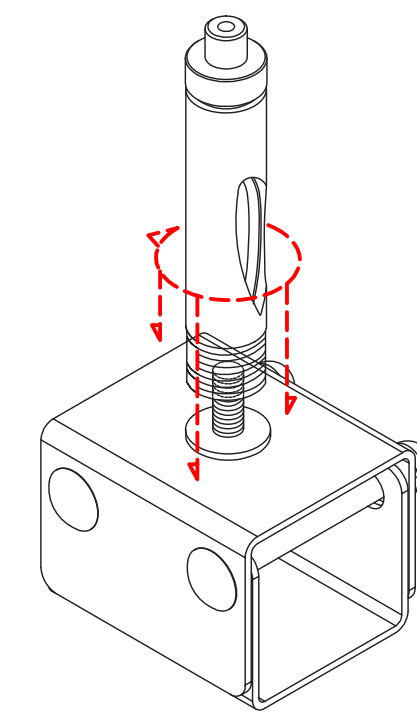
STEP 1

SUSPENDING busSTRUT



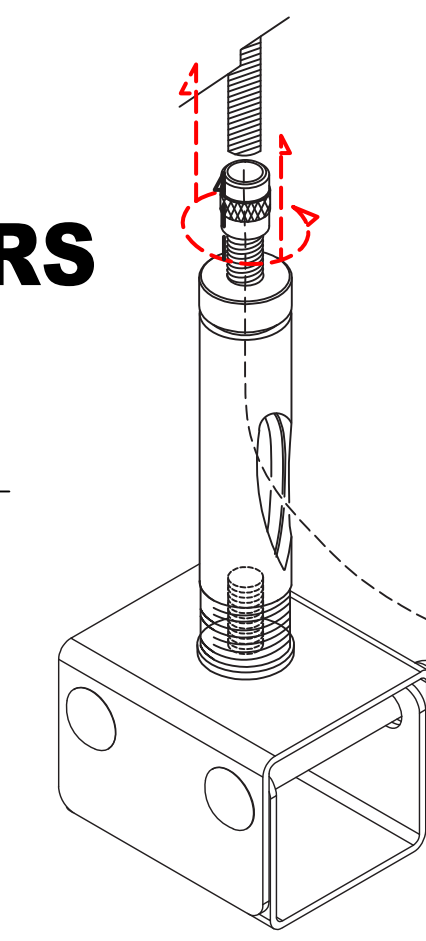
1 SUSPEND CABLES (CG-XX)

ATTACH CABLE ASSEMBLY TO STRUCTURE
*It is the contractor and/or engineer's responsibility to determine correct connection to structure (beam clamp, etc).



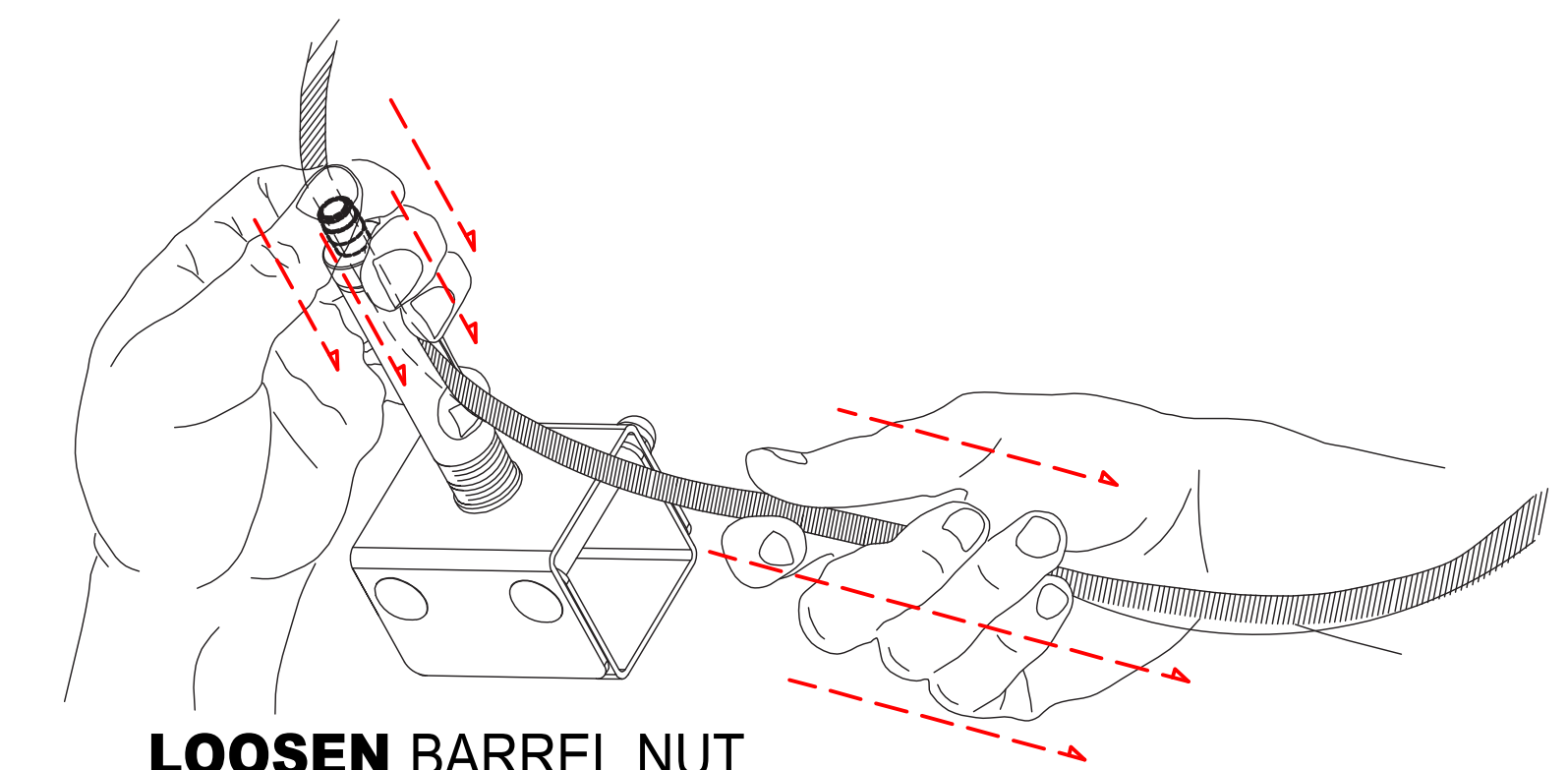
2 ASSEMBLE HANGERS (HM-S)

ASSEMBLE HANGERS AND ATTACH CABLE GLIDE



3 ATTACH HANGERS TO CABLES (CG-XX)

FEED CABLES THROUGH GLIDE TO ATTACH



LOOSEN BARREL NUT
PUSH CABLE THROUGH
PULL CABLE FOR SLACK

SLIDE busSTRUT THROUGH SUSPENDED HANGERS

Assemble
Create cable suspended runs of busSTRUT. Usually, these are running perpendicular to structural joists. Insert busSTRUT lengths through hangers/crossovers working from FINISHED HEIGHT.

FINISHED HEIGHT

*It is the contractor and/or engineer's responsibility to determine correct connection to structure (beam clamp, etc).

LEVEL busSTRUT AND TRIM CABLE

FINISHED HEIGHT

CUT CABLE
Leave enough pass through cable for future leveling

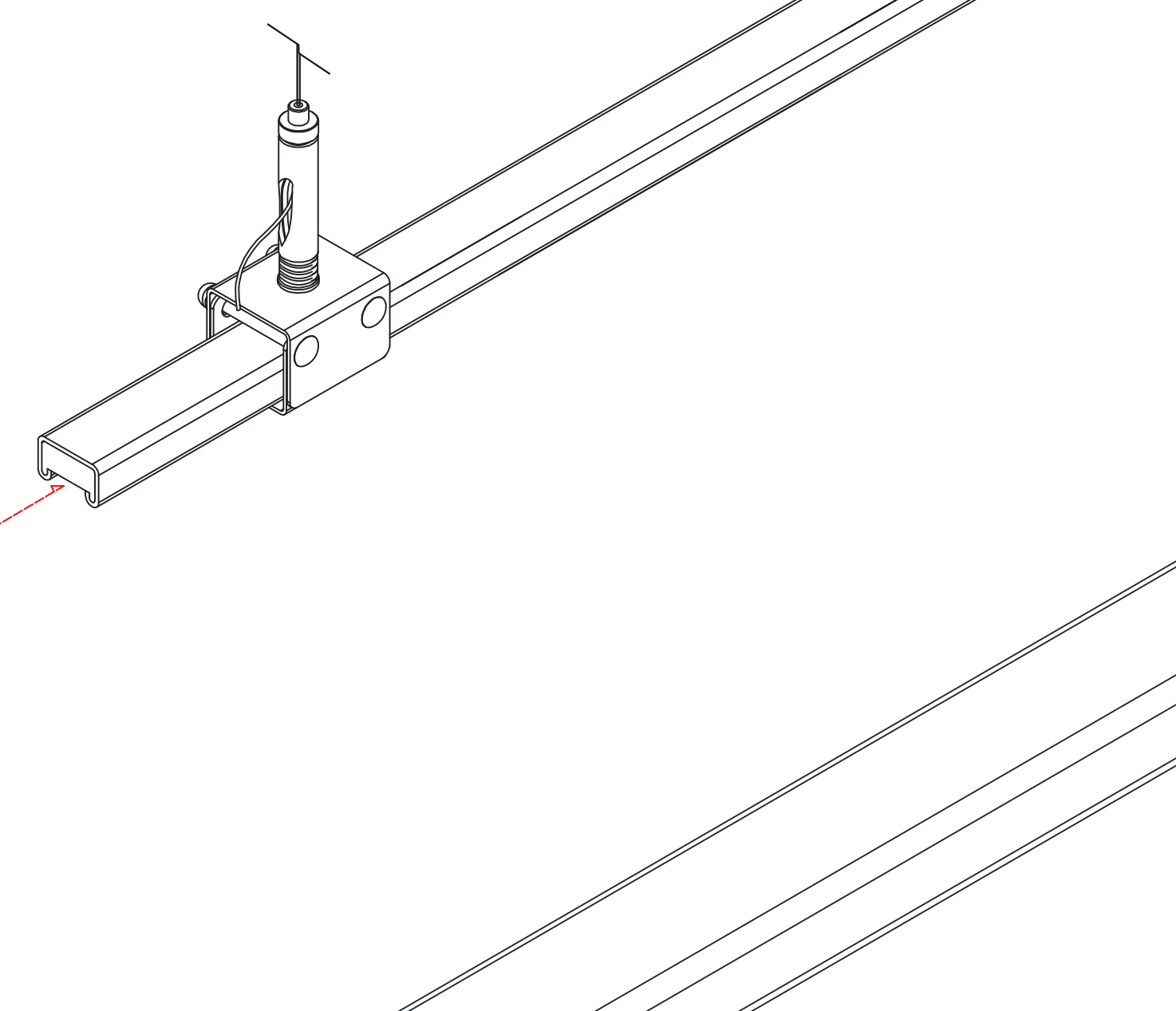
BE SURE TO FOLLOW busSTRUT MOUNTING RULES (SEE busSTRUT shop drawings)

STEP 2

INSERT JOINERS

ATTACH JOINERS TO EACH END OF CONNECTING busSTRUT

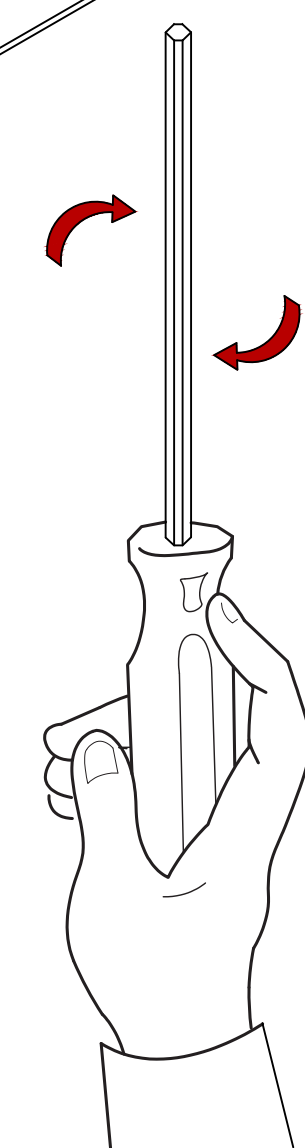
JOINERS (M-JB)
Joiners are used to mechanically and electrically connect individual busSTRUT lengths.



TIGHTEN JOINERS

TIGHTEN SET SCREWS ON THE BOTTOM OF THE JOINER

Joiners require 3/32 Hex key for tightening set screws



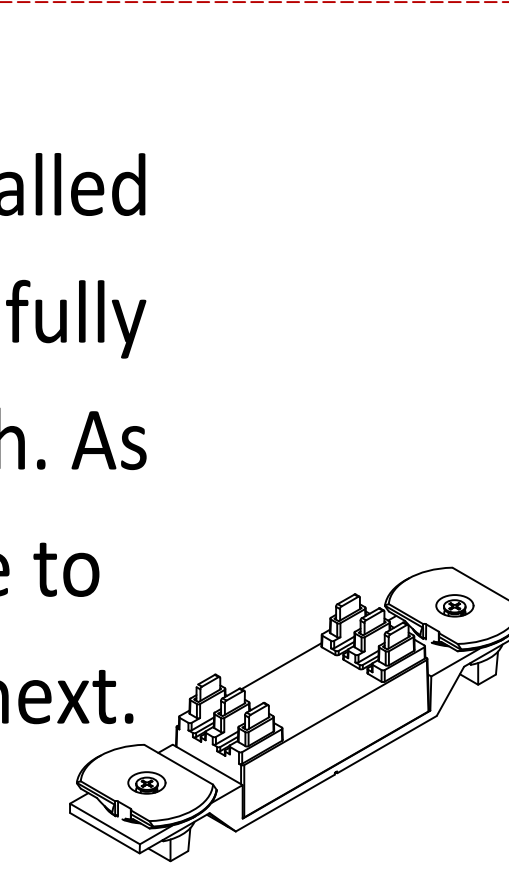
ATTACH INSERT

ATTACH JOINERS TO EACH END OF CONNECTING busSTRUT

Line up center of insert with etched centerline on joiner sleeve

JOINER INSERT (M-JI-X)

A single piece unit that is installed with two knobs, one must be fully turned in each abutting length. As a result, power can continue to flow from one length to the next.



Turn the first knob
Squeeze tightly on the opposite side, then turn the second knob to secure the electrical connection.

**Installation Instruction Guidelines are provided only as that, informative guidelines. Defer to architectural/engineering drawings tailored to the specific project.



busSTRUT
805 Hilldowne Road
Suite C
Westerville, OH
43081
TEL: 614.933.8695
E-MAIL: INFO@BUSSTRUT.COM
WWW.BUSSTRUT.COM

DESIGNED BY
LARRY GELLERT
CHECKED BY
JOHN LOCH
DRAWN BY
JOHN LOCH
DATE
11/01/2024
JOB NO.
BID / REVIEW

TYPICAL
busSTRUT Installation Instructions

busSTRUT SHOP DRAWING SET ONLY!
NOT A REPLACEMENT FOR ARCHITECTURAL / ENGINEERING OR ELECTRICAL DRAWINGS

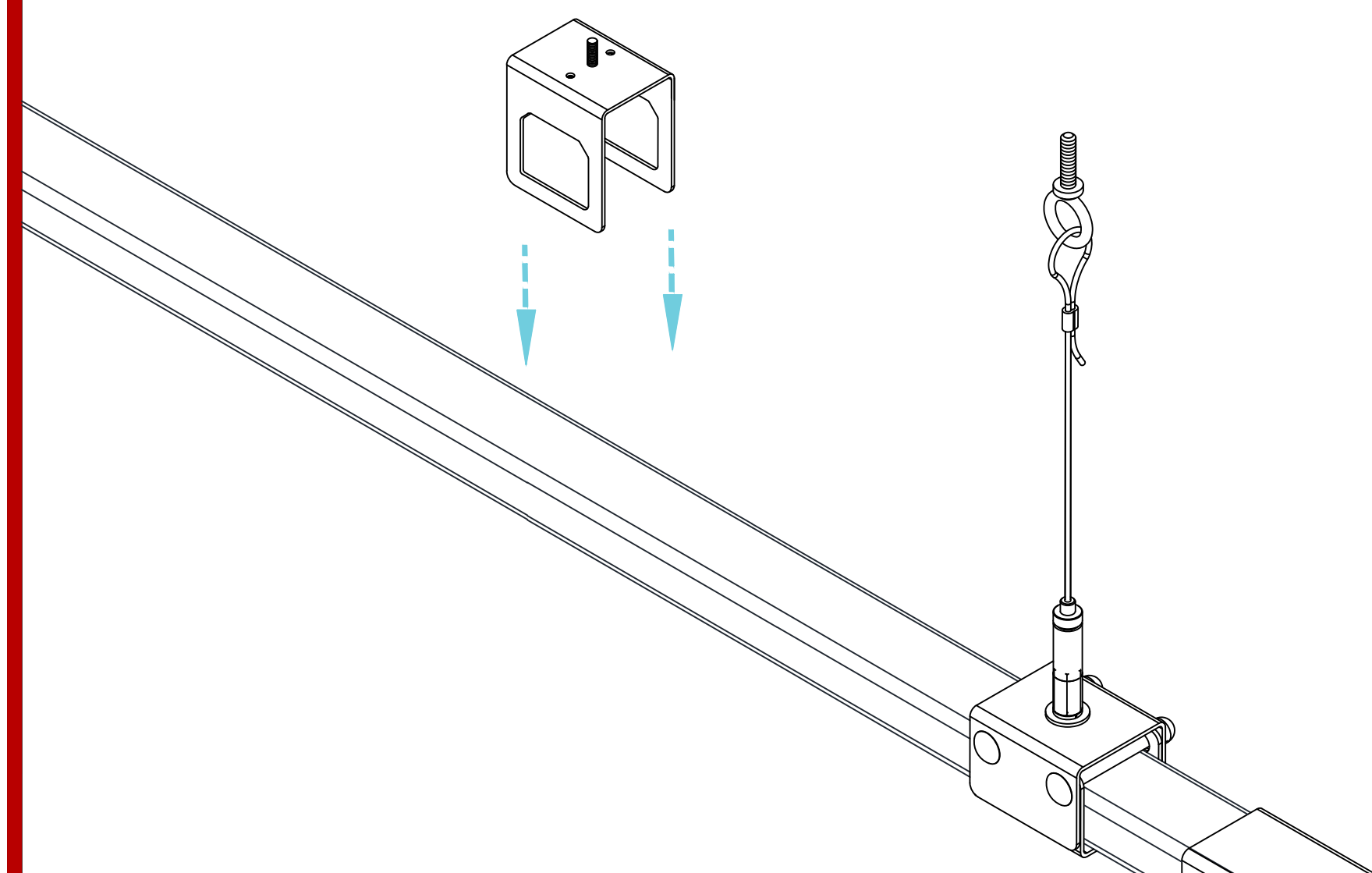
NO.	DATE	REVISION DESCRIPTION
XX	XXXX	PERSON DESCRIPTION

PAPER SIZE:
ARCH E (48x36)
NOT TO SCALE
DRAWING NUMBER
E-b01

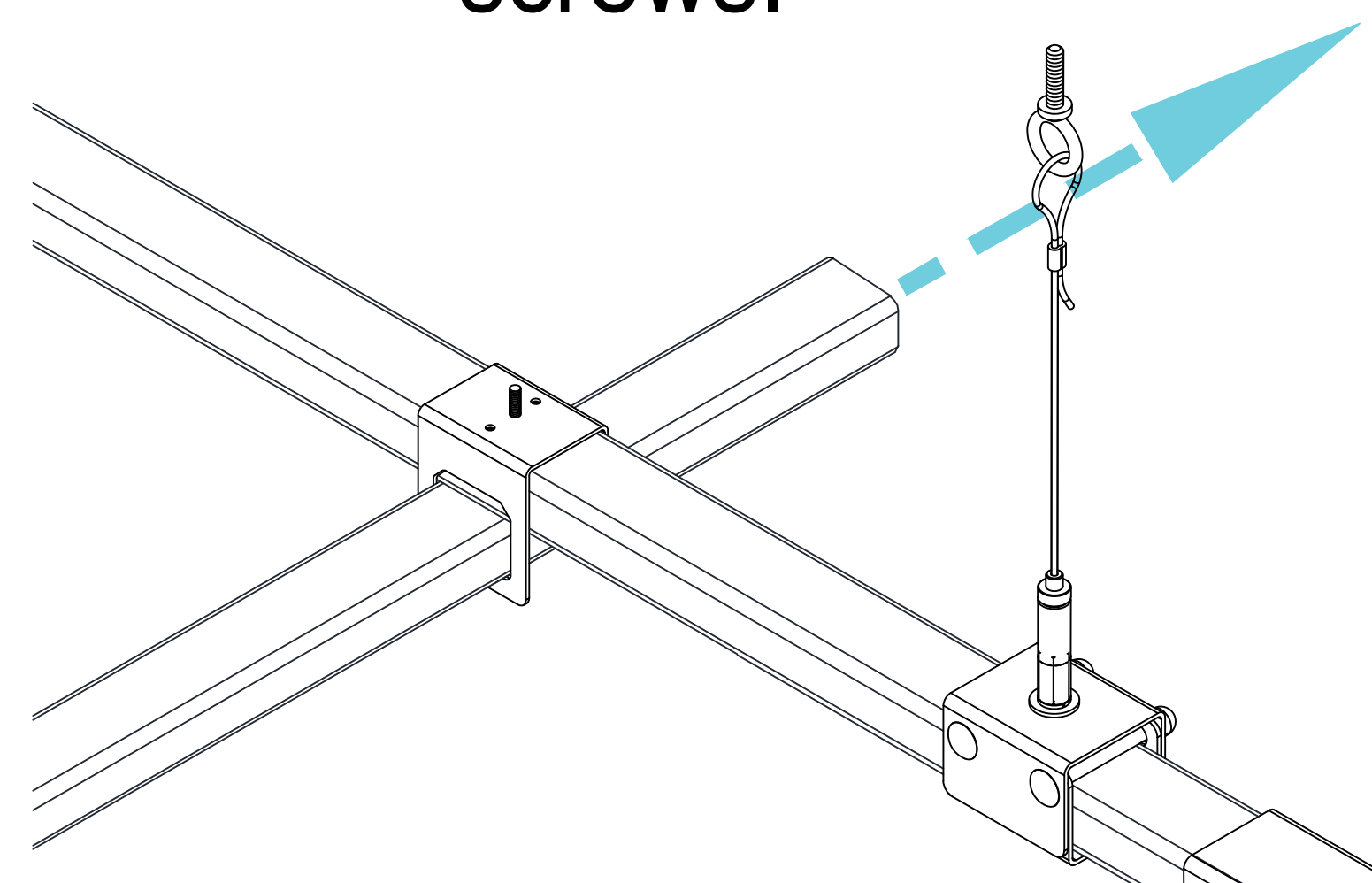
STEP 3

INSTALLING CROSSOVERS DROPPING ON

Crossovers can be dropped onto suspended busSTRUT to create an intersection with a perpendicular run of busSTRUT.

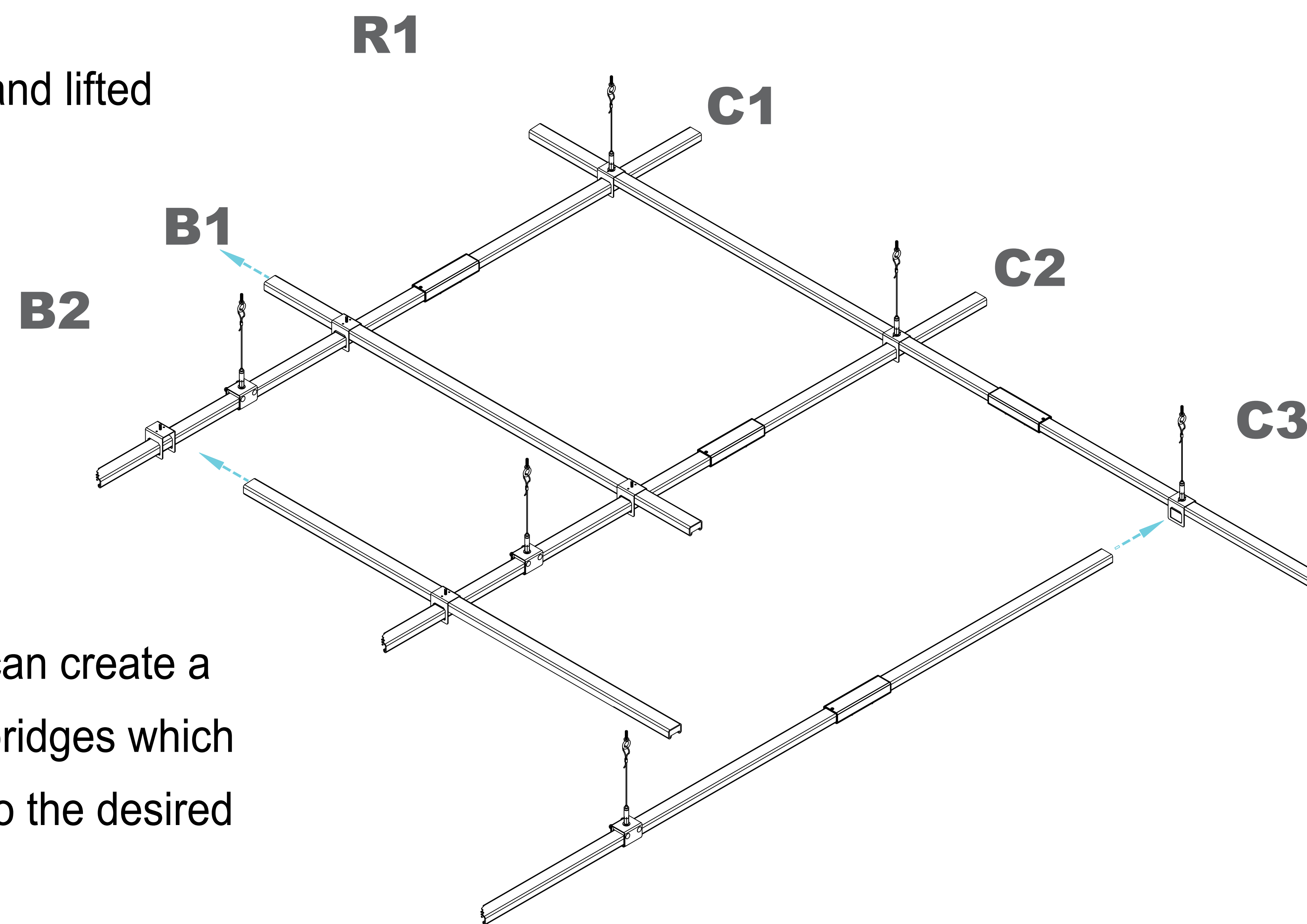


Slide perpendicular runs of busSTRUT through the crossover and tighten the set screws.



SLIDING ON

Crossovers can be slid into position and lifted to create perpendicular bridges.

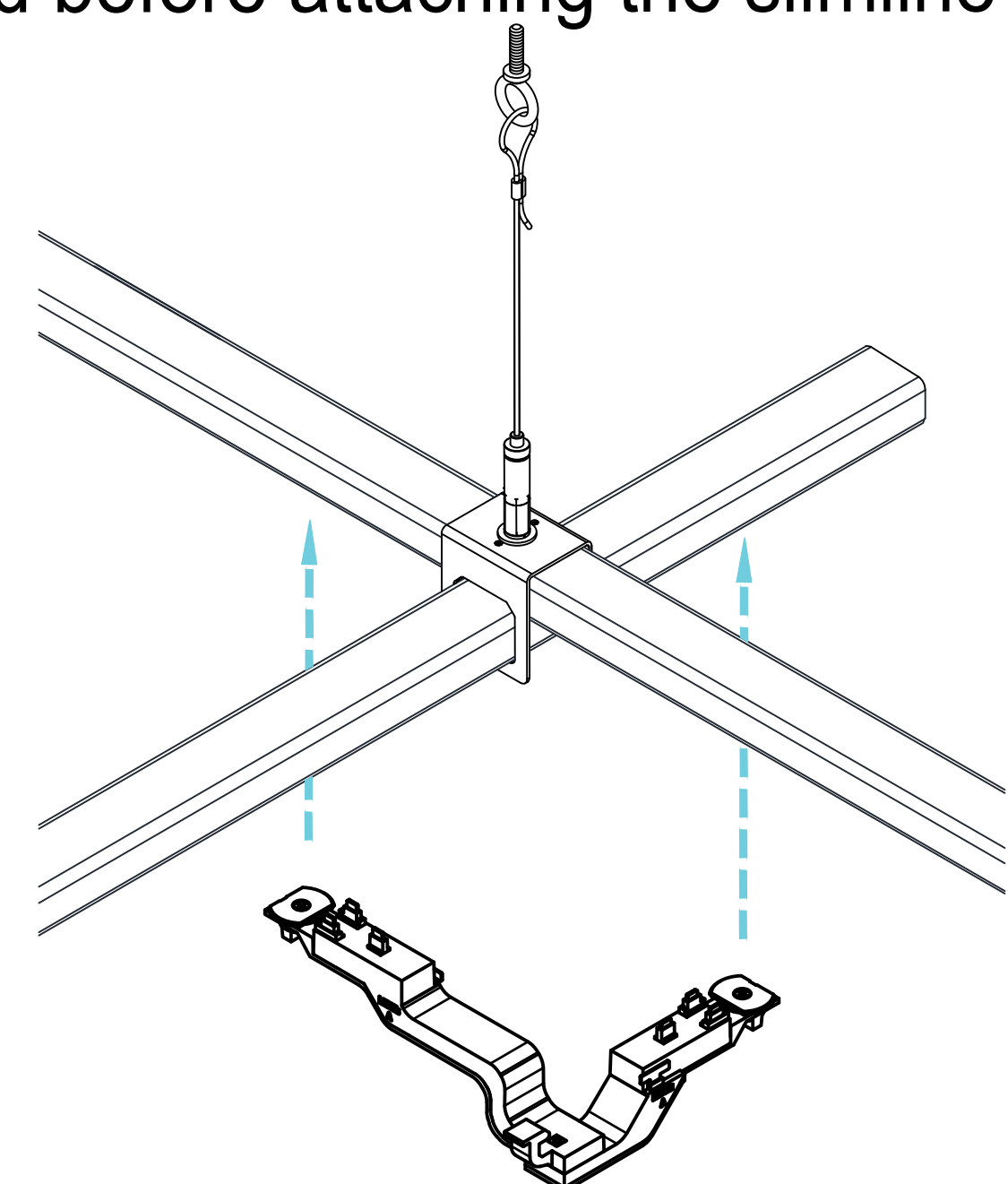


Perpendicular runs can create a full grid or be short bridges which are easily moved into the desired position.

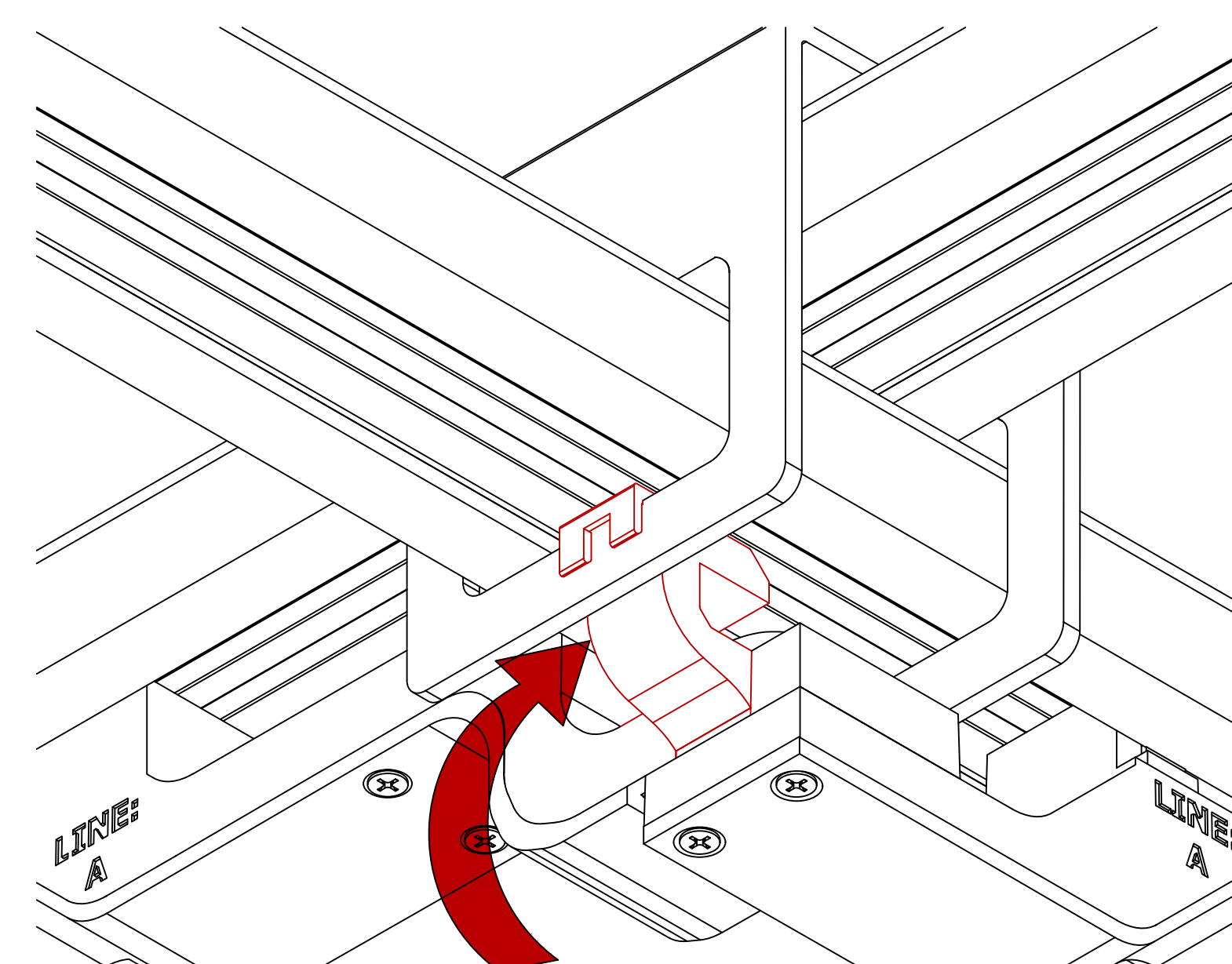
STEP 4A

SLIMLINE JUMPER

Make sure that the slimline crossover is tightened before attaching the slimline jumper.

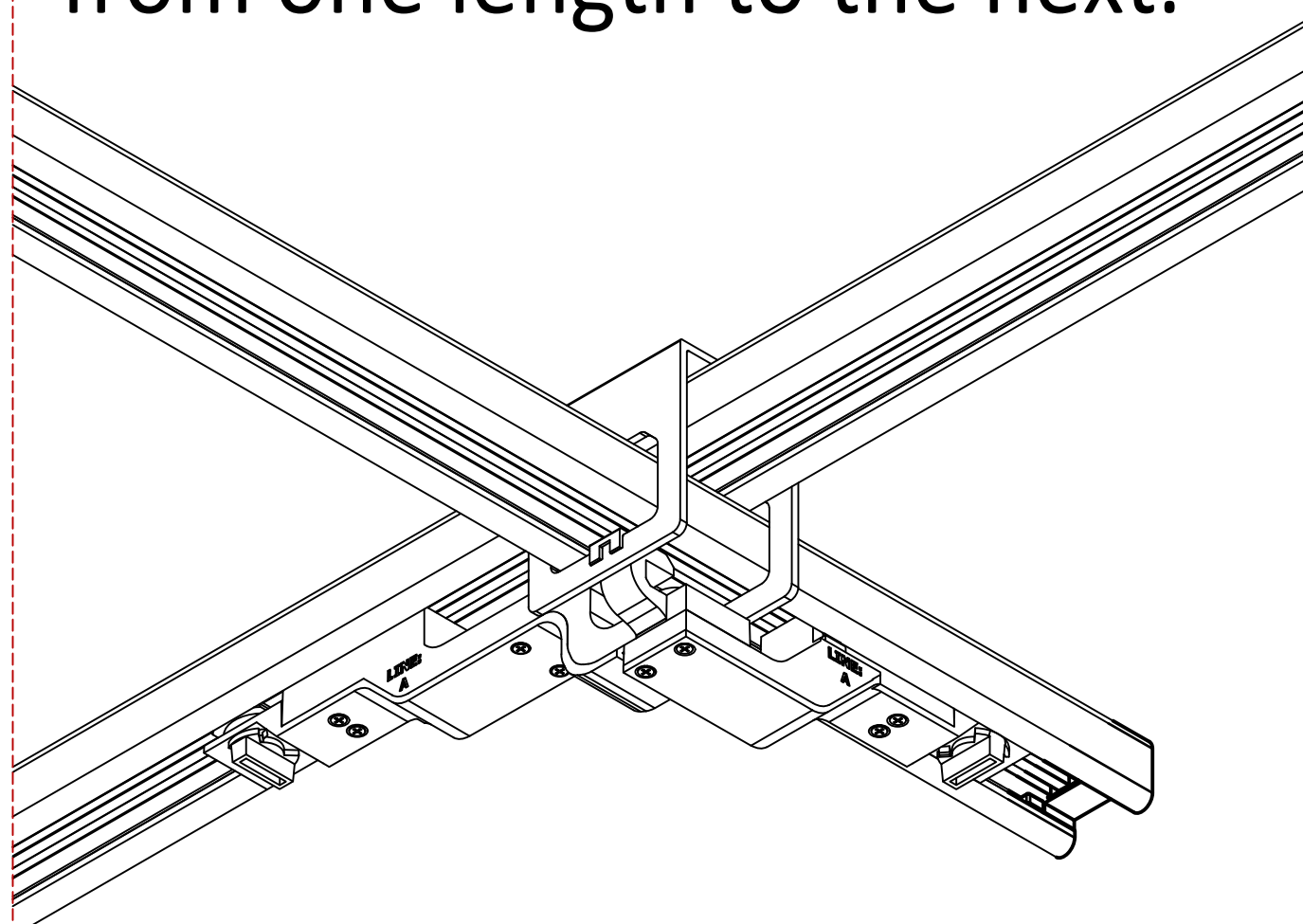


First, clip the jumper to the crossover.

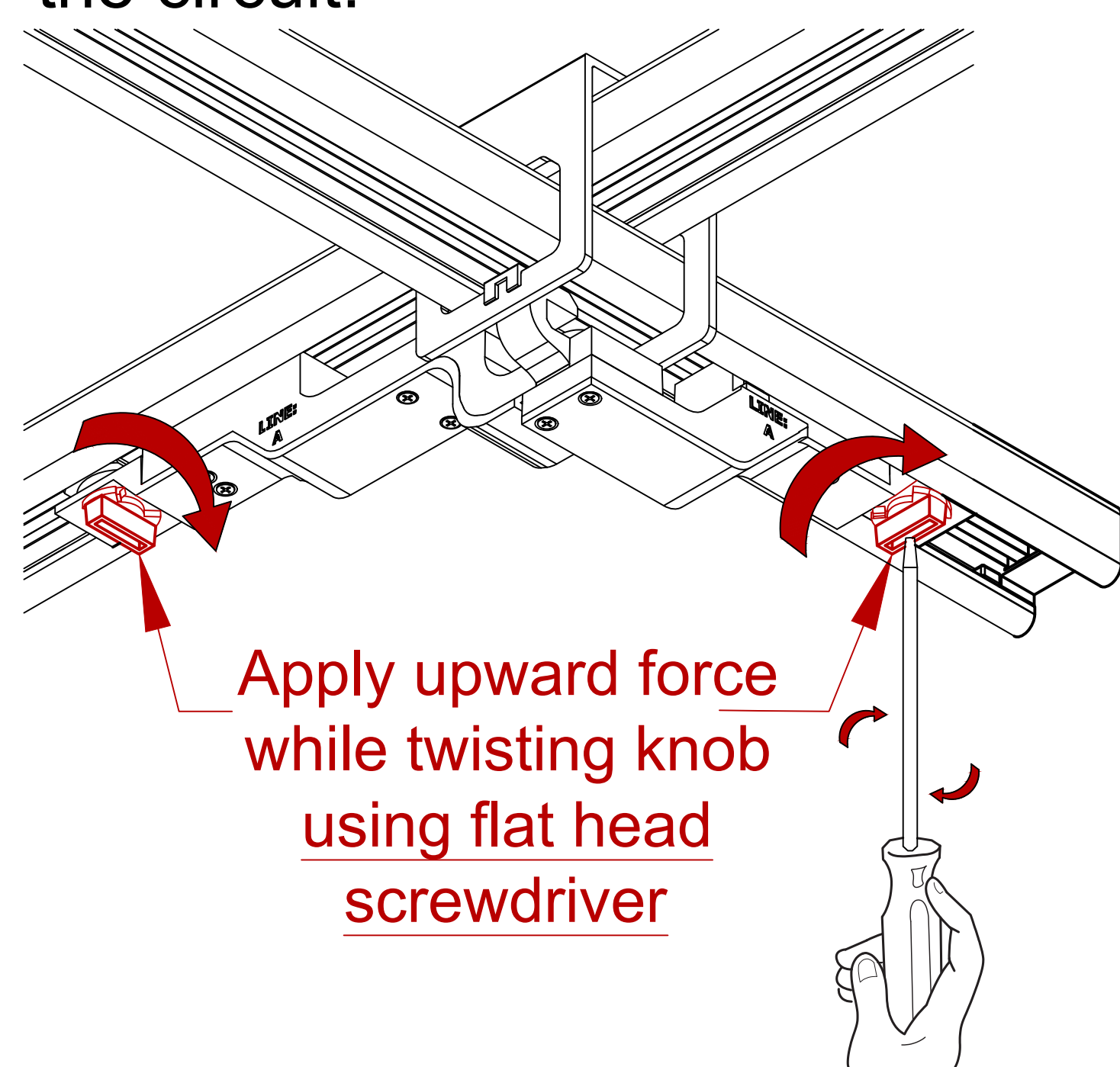


SLIMLINE JUMPER (MD2020-UNIV-IJ2-B-X)

A single piece unit that is installed with two knobs, one must be fully turned in each abutting length. As a result, power can continue to flow from one length to the next.



Seat the jumper into the busSTRUT by squeezing tightly on one side and turning the knob. Then, turn the other knob to complete the circuit.

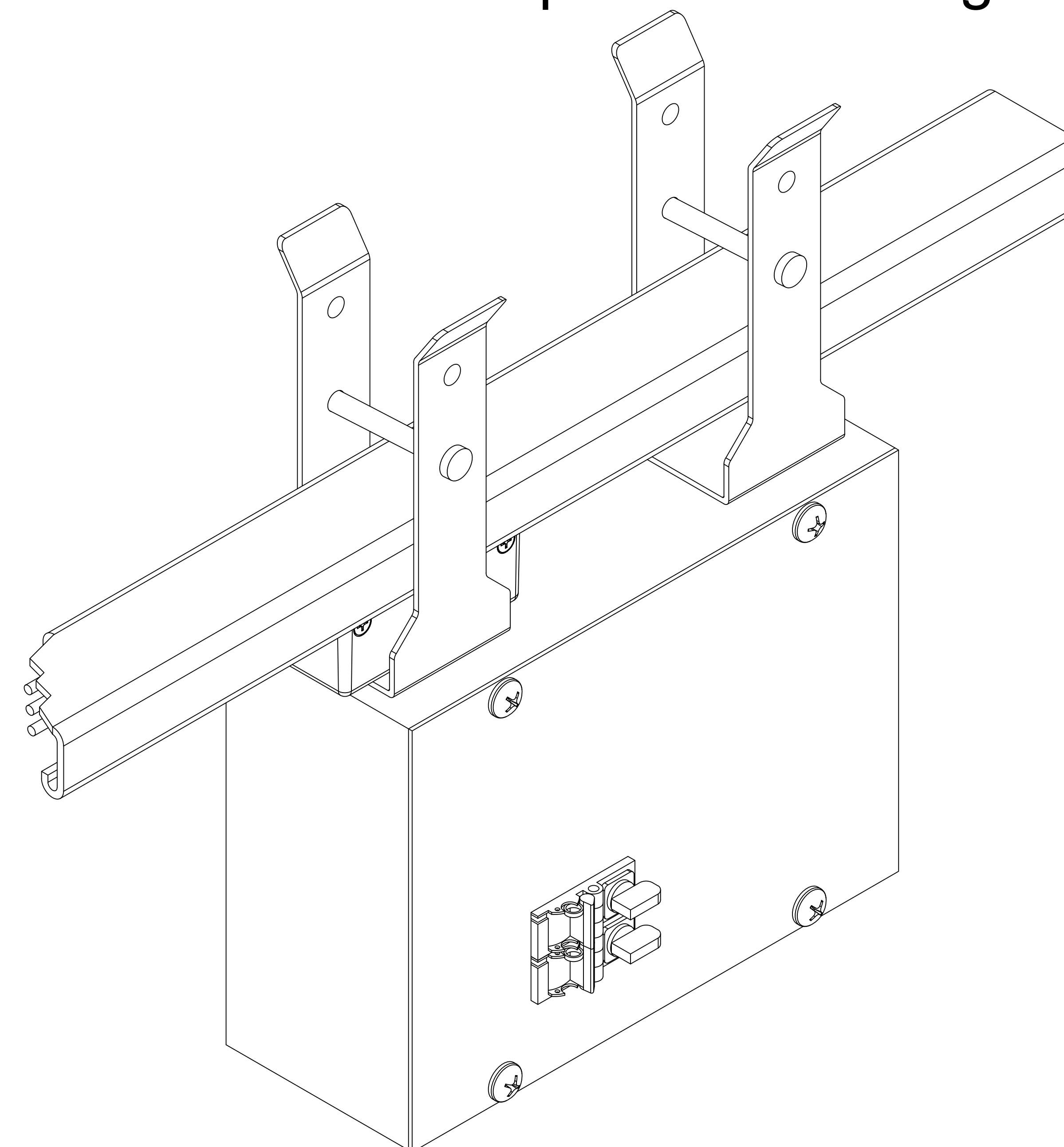


Apply upward force while twisting knob using flat head screwdriver

STEP 4B

LINE FEEDS

Install line feeds on busSTRUT to power the configuration.

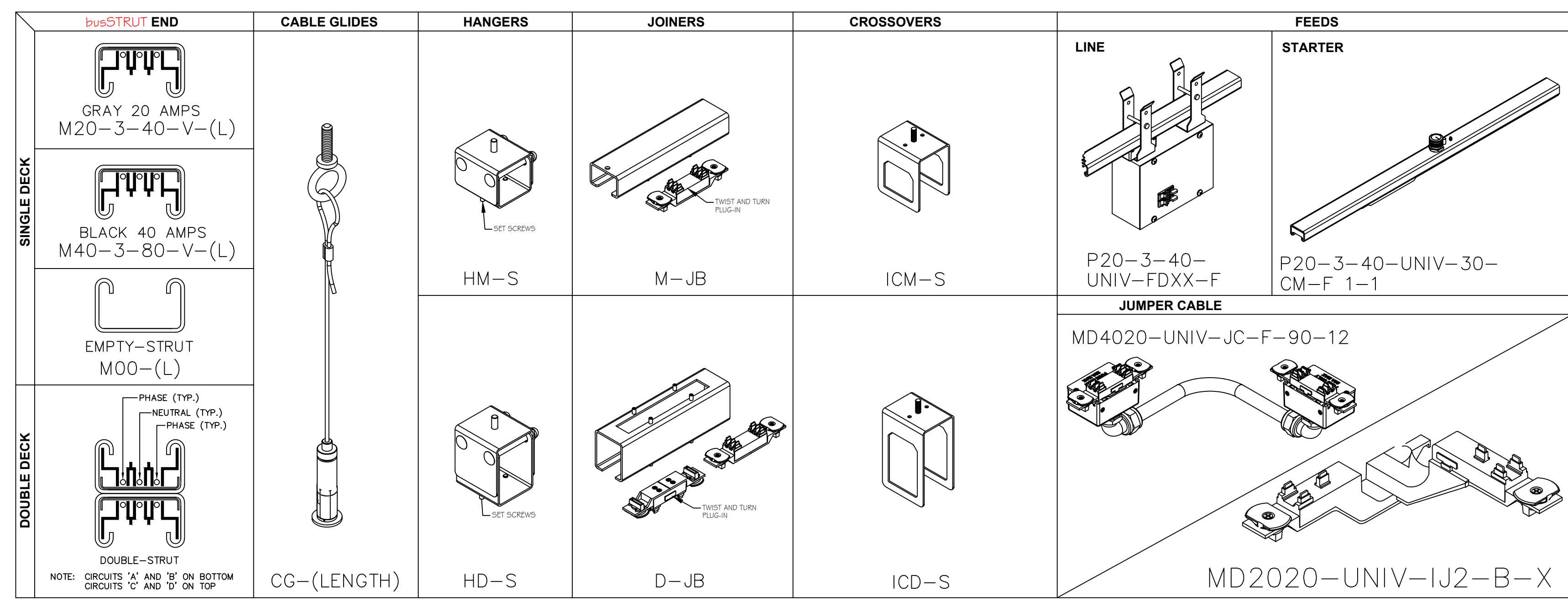


20A LINE FEED

Shown on single decked busSTRUT

**Installation Instruction Guidelines are provided only as that, informative guidelines. Defer to architectural/engineering drawings tailored to the specific project.

busSTRUT Parts



busSTRUT 12 gauge 1" x 1" x 1.58" STEEL. **busSTRUT** features two Hot wire symmetrically surrounding a center Neutral. The result, two 20 Amp circuits 40 Amps Maximum with **busSTRUT** (20) alternatively two 40 Amp circuits 80 Amps Maximum with **busSTRUT** (40). 2, 5, 10, and 20' lengths. Rated for up to 277/480V. Double decks with standard hardware for trunking.

BRAIDED CABLE with GUIDE: For use with **busSTRUT**. Hangers/Crossovers. Includes cable-glides and cable with factory assembled cable looped threaded 1/4-20" eye bolt.

HANGERS: Single and Double Hangers are for use with **busSTRUT**. Each is an assembled two-part unit. The upper piece includes a threaded stud for use with **busSTRUT** cable-glides.

JOINERS: Single and Double are for use with **busSTRUT**. Lengths are joined together mechanically with the 8" steel sleeve. Electrical Joiner-Kits include both a Twist & Turn Plug to electrical insert to bridge power. And continuous grounding wires through the bus itself by means of a permanently affixed copper grounding bar.

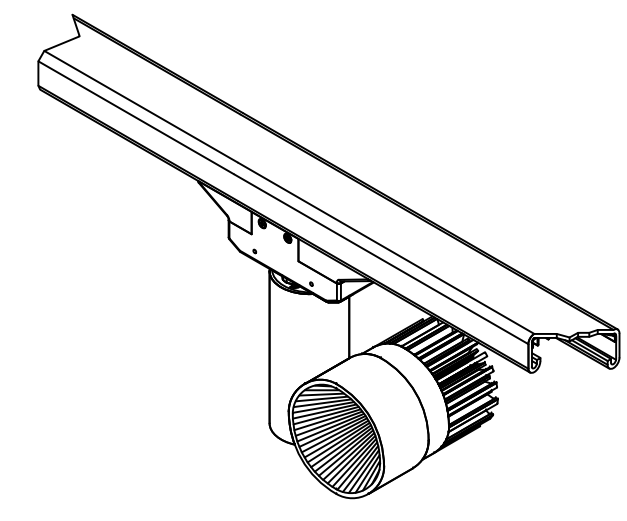
CROSSOVERS: For use with intersecting **busSTRUT**. Each is an assembled two-part unit for building grid configurations and bridges. The upper piece includes a threaded stud for use with **busSTRUT** cable-glides.

JUMPERS: For use with both **busSTRUT** (20) and **busSTRUT** (40). The fused 4000 Jumper Cables can be used to electrically connect **busSTRUT** (740) Trunks to **busSTRUT** (20) Branches and/or electrically connecting **busSTRUT** (20) to **busSTRUT** (20).

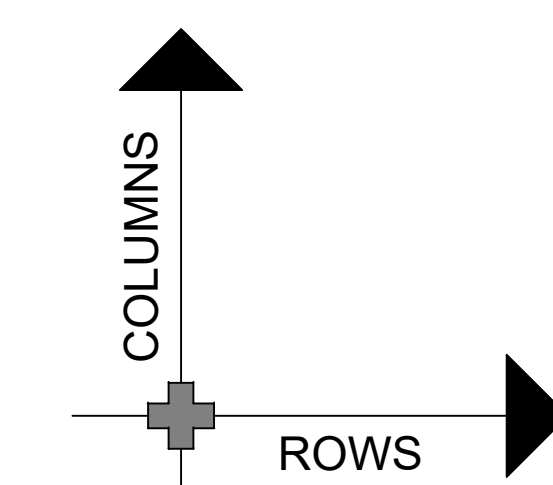
LINE FEEDS: For use with powering single-decked **busSTRUT**. Junction Box features energy code type "Tentex" (Overcurrent holder) and 3 Pole Fuses. Available up to 277/480V. Can be positioned anywhere along **busSTRUT** to reduce the lengths of trunks.

STARTER FEEDS: For use with powering single-decked **busSTRUT**. Utilized when no current limiting is required on the **busSTRUT**. Must be positioned at the beginning of a run.

Lights



ACCENT LIGHT
BR-LUCY-U-309-30-F-(OC)
N.T.S.



Legend

- busSTRUT 20 / Single Deck
- 30" Starter Feed
- Joiner
- 1/1 Slimline Crossover
- Slimline Jumper

Lighting Plan

busSTRUT LIGHTING PLAN ONLY
THIS DRAWING IS MEANT TO SHOW THE LOCATION OF **busSTRUT** LIGHTS ONLY. IT IS NOT A REPLACEMENT FOR: ARCHITECTURAL / ENGINEERING / ELECTRICAL SPECIFICATIONS. (SEE THEIR DRAWINGS)

Bill of Materials

busSTRUT Bill of Materials															Drawn By	John Loch							
ROWS Large LT															Checked By	John Loch							
Finish TBD: Galvanized, White, or Black															Date	10/4/2024							
				busSTRUT LENGTHS				busSTRUT Hardware				busSTRUT POWER				GEN	ACT						
R/C	Amps	LF	BF	2.5	3	5	7	M	INS	NE-INS	M	D	C-GI	1/1	12"	INVS	JK	30ST	PD	WW	LUCY		
Rows																							
R1	20	15	15	1	1	1	1	3	3		1	3	3	2				1					4
R2	20	15	15		1	1	1	2	2		1	2	2			1							4
R3	20	15	15		1	1	1	2	2		1	3	3	2									4
R4	20	15	15		1	1	1	2	2		1	3	3	2									4
R5	20	15	15		1	1	1	2	2		1	3	3	2									4
SUB TOTAL		75	75	1	5	4	5	11	11		5		15	10		4		1					20
Columns																							
C1	20	30	30		3		3	5	5								1						8
C2	20	30	30		3		3	5	5								1						6
SUB TOTAL		60	60		6		6	10	10							2							14
STORE TOTAL		135.0	135.0	1	11	4	11	21	21		5		15	10		6		1					34

Labor Hours

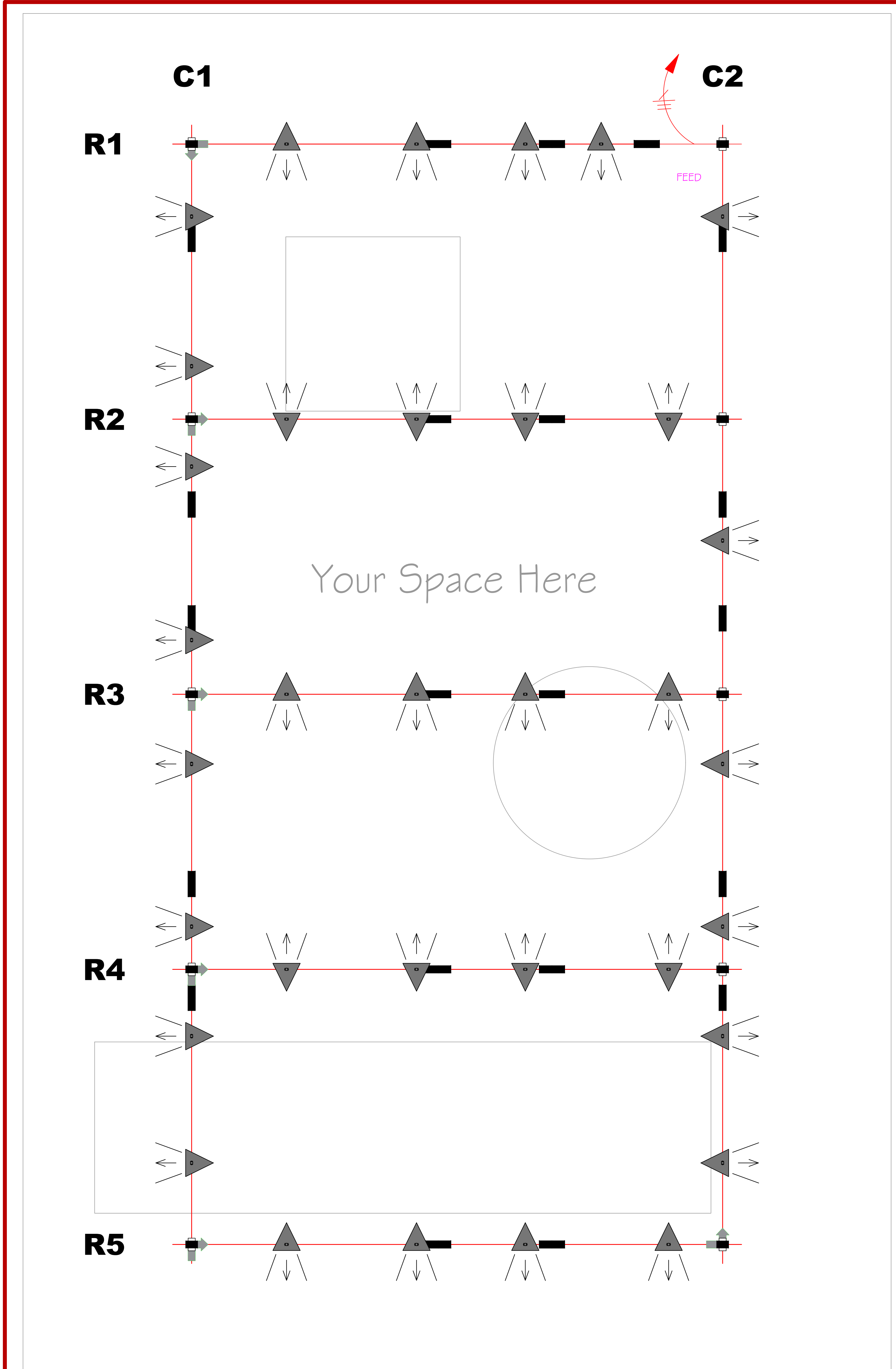
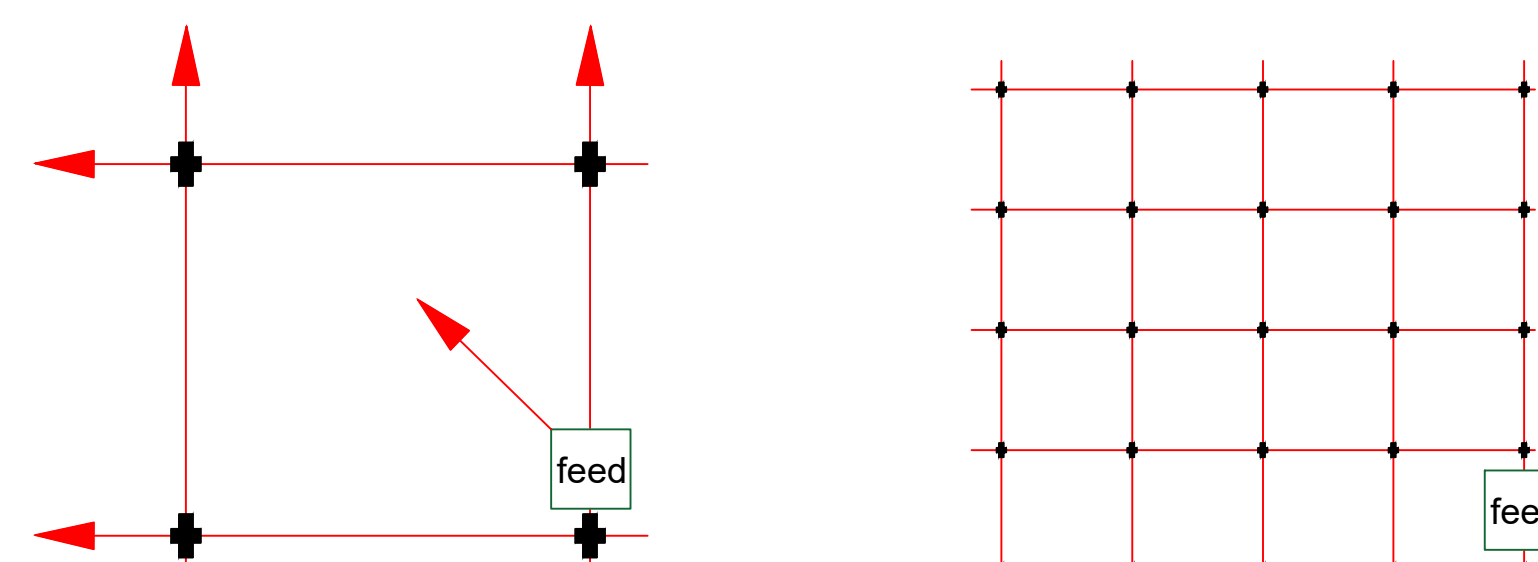
busSTRUT provides time-tested standard labor hours per part, which are then multiplied by the project's Bill of Materials.

busSTRUT LABOR				
ITEMS	Qty.	U/M	STANDARDIZED LABOR HOURS	TOTAL HRS
			min	hrs @0
LENGTHS	135	LF	0.05	6
JOINERS	21	EA	0.20	4
HANGERS	15	EA	0.42	6
CROSSOVERS	10	EA	0.17	2
ATTACHMENTS		EA	0.13	0
JUMPERS	6	EA	0.16	1
FEEDS	1	EA	0.25	0
busSTRUT SUB-TOTAL				19
ACCENT	34	EA	0.13	5
LINEARS		EA	0.33	0
busSTRUT READY LIGHTS SUB-TOTAL				5
TOTAL TIME				24

busSTRUT system is designed to be BID separately.

Bid from the feeds-in.

* Powered by a minimal amount of feed boxes.



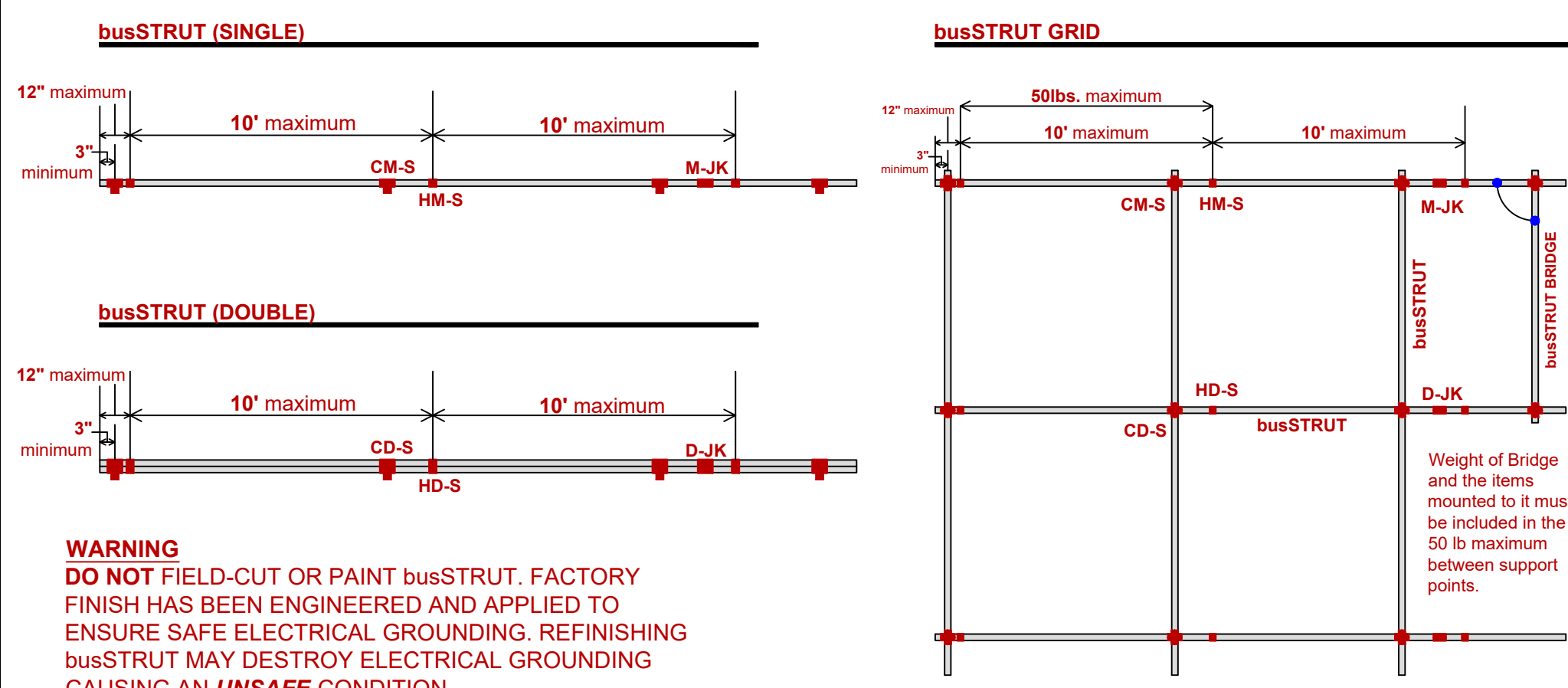
busSTRUT
805 Hilldowne Road
Westerville, OH
43081
TEL: 614.933.8895
E-MAIL: INFO@BUSSTRUT.COM
WWW.BUSSTRUT.COM

DESIGNED BY
LARRY GELLERT
CHECKED BY
JOHN LOCH
DRAWN BY
JOHN LOCH
DATE
11/01/2024
REVISION
BID/REVIEW

Lighting Plan & Bill of Materials
Rectangle Large - Lights

busSTRUT SHOP DRAWING (SET ONLY) NOT A REPLACEMENT FOR ARCHITECTURAL / ENGINEERING OR ELECTRICAL DRAWINGS	
NO.	DATE
XX-XX-XX	
XXXX	
REVISION DESCRIPTION	
PAPER SIZE: ARCH E (48x36)	
SCALE 3/4" = 1'-0"	
DRAWING NUMBER	
E-b1	

Mounting Rules



DISTANCE:
 10' MAXIMUM 10' spacing between support points

12" Support point must be within 12" from every end or corner

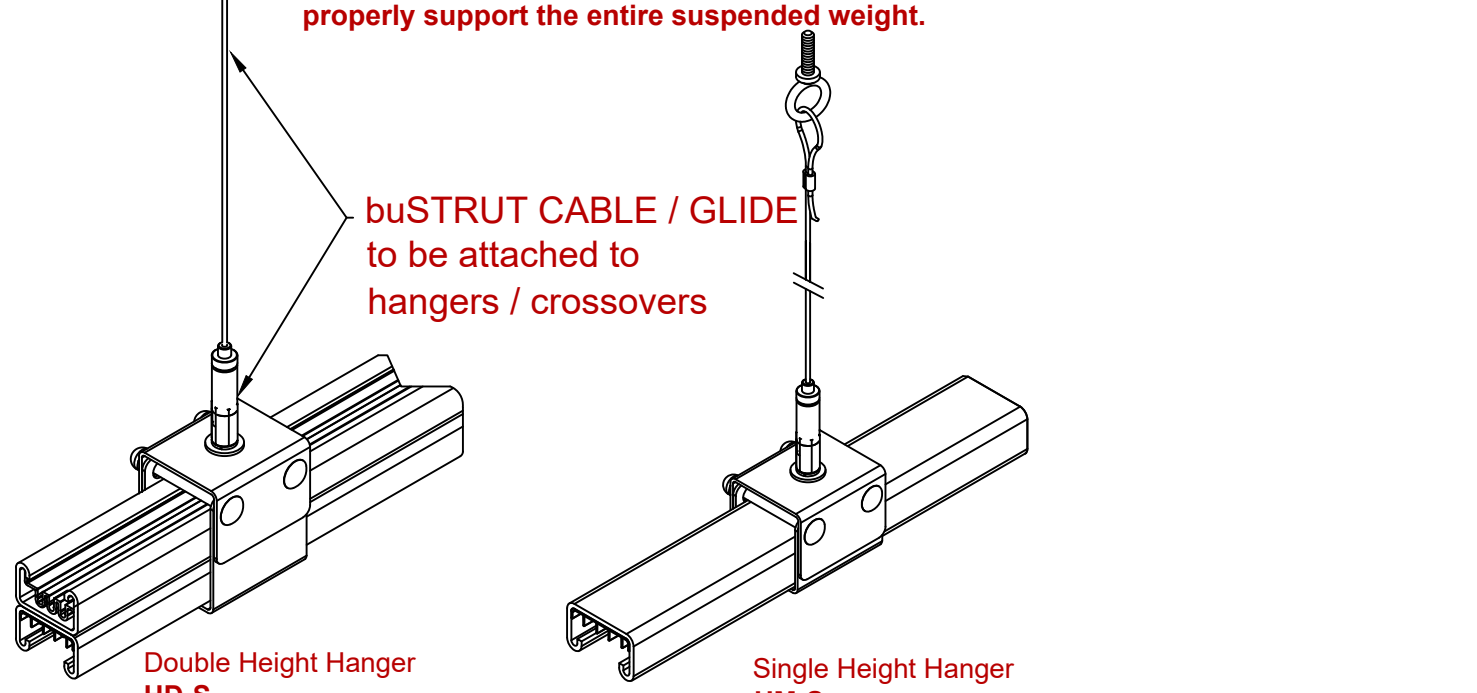
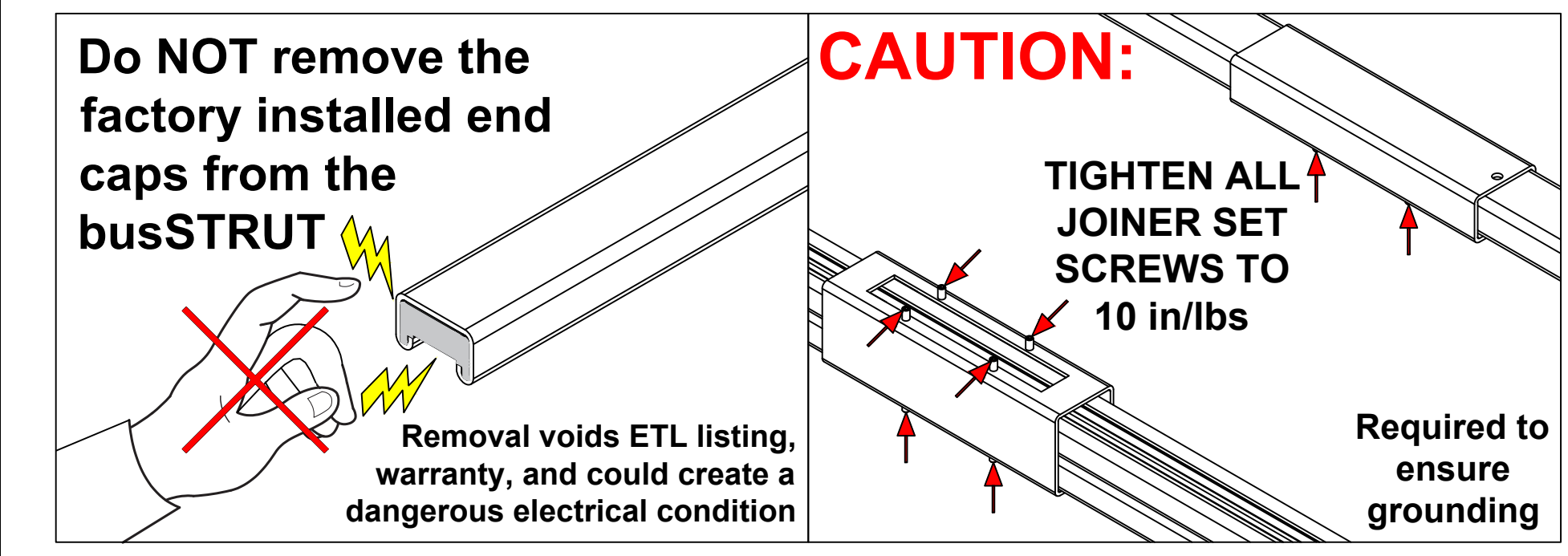
3" MINIMUM 3" of busSTRUT to be exposed beyond end of mounting hangers and/or crossovers

WEIGHT:
 50 lbs Maximum 50 pounds between support points (Include weight of busSTRUT System)
 Weight of 1 foot of busSTRUT:
 Single (MIN) - 1.5 lb per Linear Foot (not including connected weight)
 Double (MAX) - 3 lb per Linear Foot (not including connected weight)

FITTERS
 40 lbs The busSTRUT Flip-Fitters (with metal bracket) are rated for 40 lbs maximum static, vertical load.
 Flip-Fitters without metal bracket are for use with standard track light fixtures only. Consult for maximum weight restrictions.

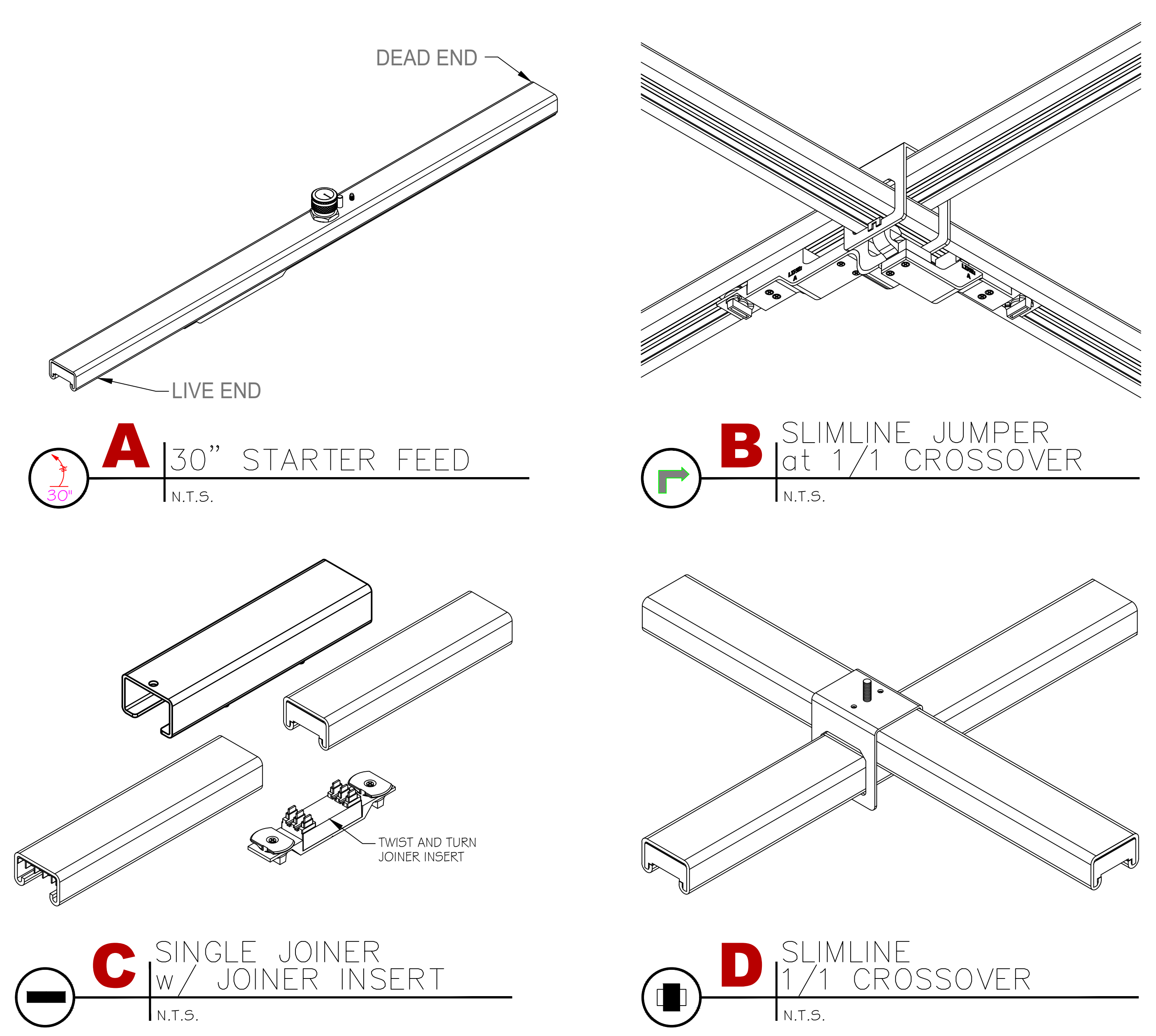
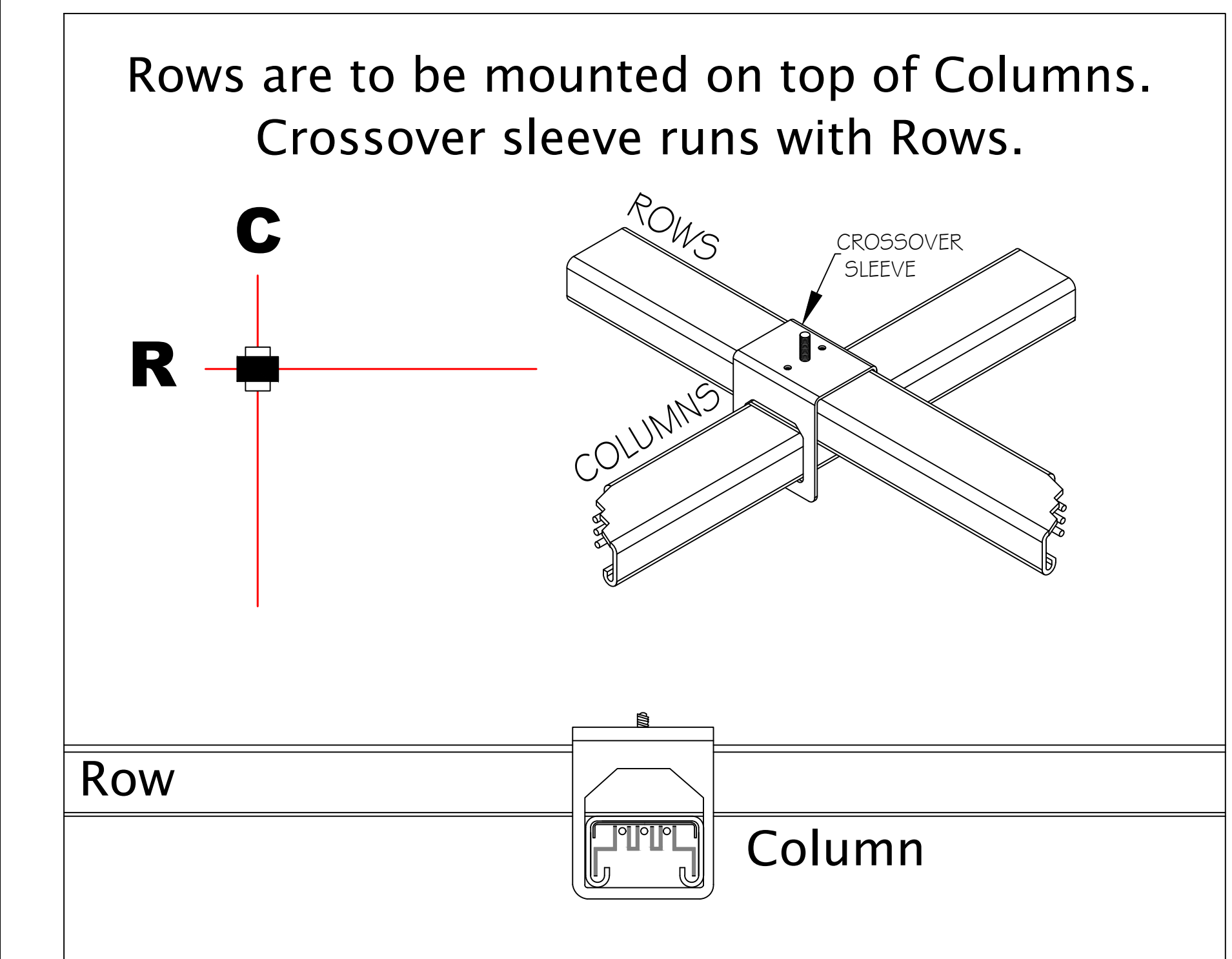
Only busSTRUT fittings and hardware may be mounted directly to busSTRUT.

CONNECTION TO STRUCTURE BY OTHERS
 Attachment from busSTRUT System to structure must be engineered and installed to properly support the entire suspended weight.

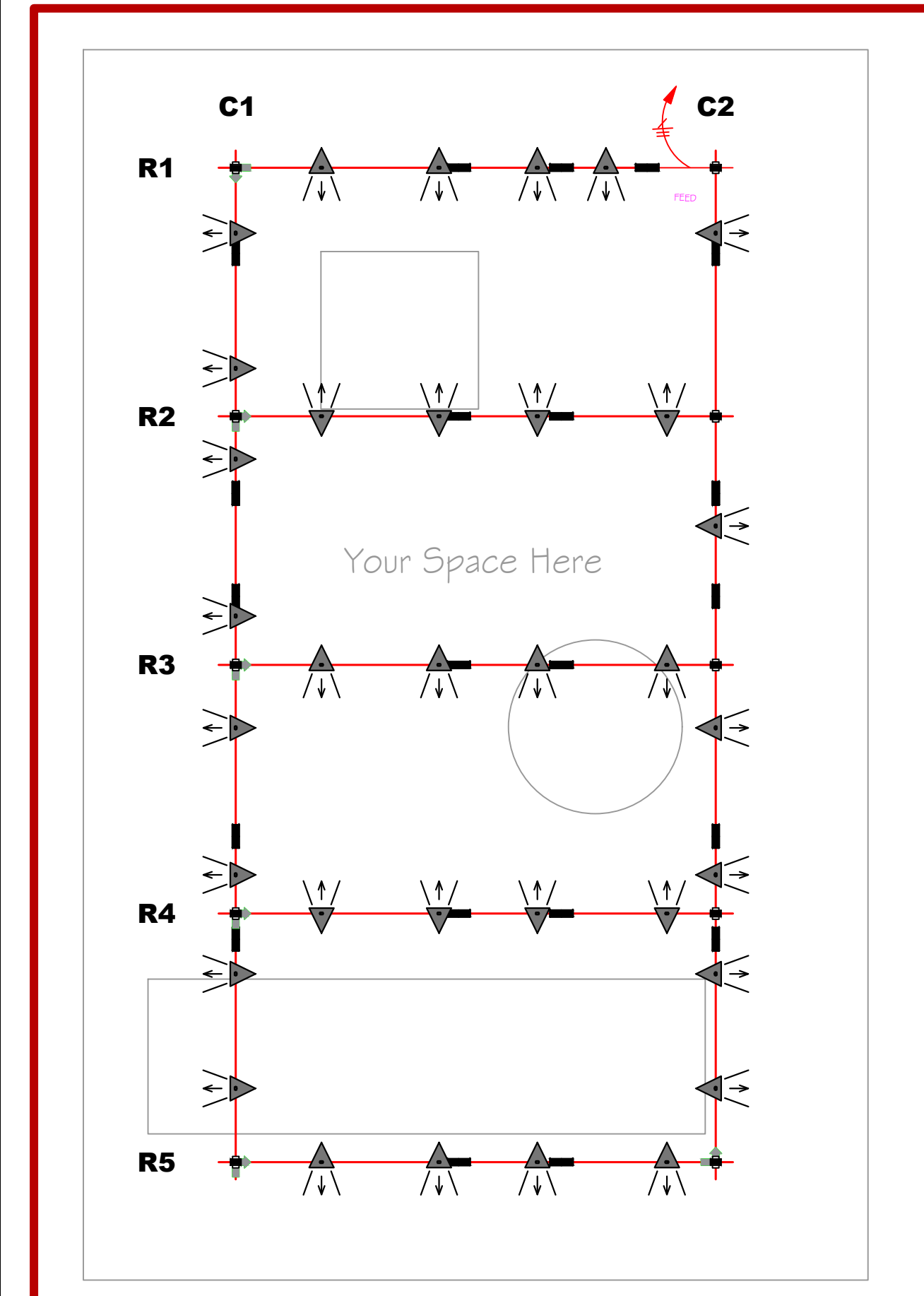


Project Specific Rules

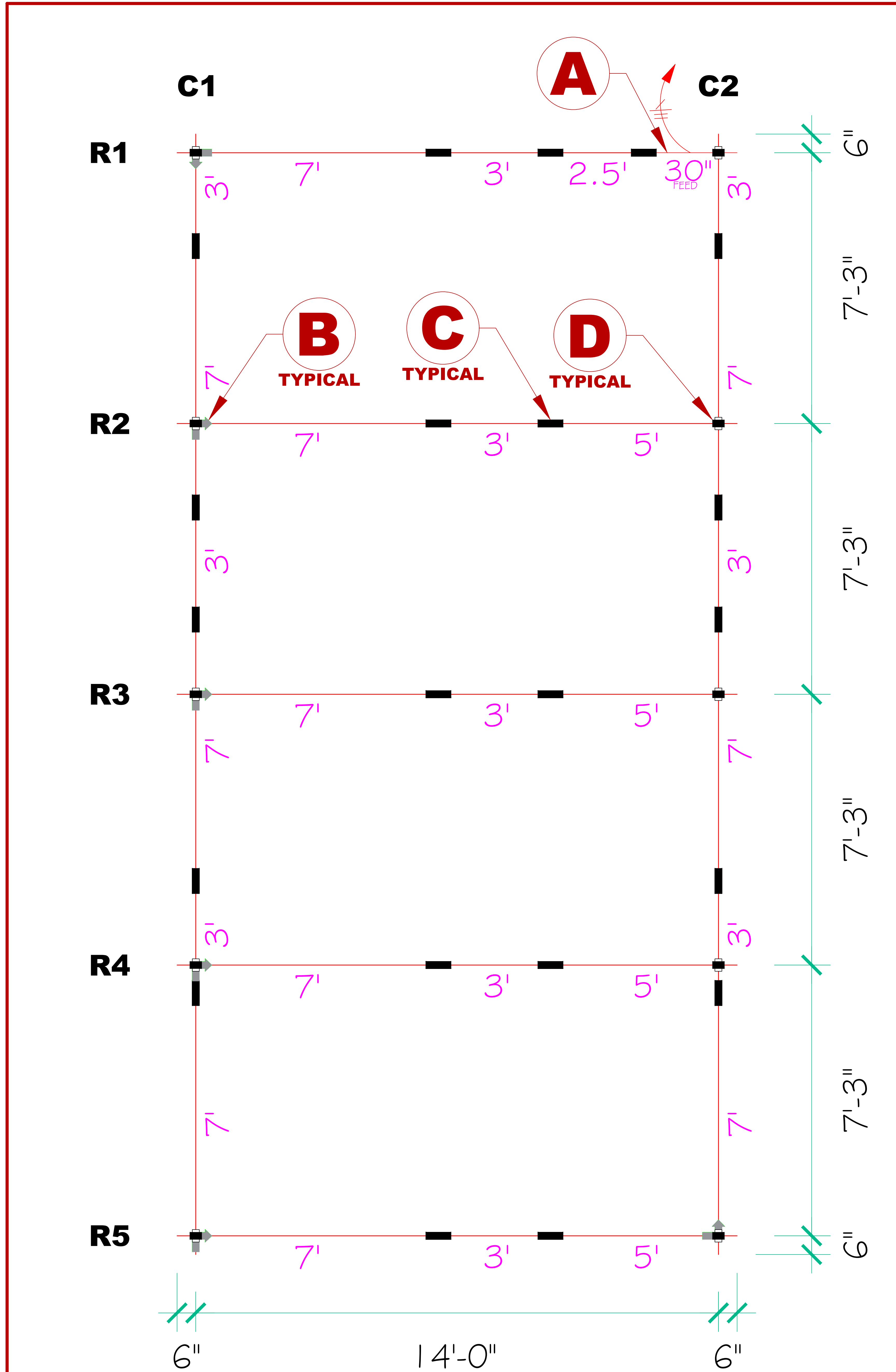
ISO Details



- busSTRUT Lengths Used in this Project**
- 2.5'
 - 3'
 - 5'
 - 7'



Dimensions



Legend

	busSTRUT 20 / Single Deck
	30" Starter Feed
	Joiner
	1/1 Slimline Crossover
	Slimline Jumper

bs

busSTRUT
 805 Hillside Road
 Suite C
 Westerville, OH
 43081
 TEL: 614-933-8695
 E-MAIL: INFO@BUSSTRUT.COM
 WWW.BUSSTRUT.COM

DESIGNED BY: LARRY GELLERT
 CHECKED BY: JOHN LOCH
 DRAWN BY: JOHN LOCH
 DATE: 11/01/2024
 REVISION: BID/REVIEW

Assembly Plan

Rectangle Large - Lights

busSTRUT DRAWING SET (ONLY) STOP HERE! NO PROCEED TO ARCHITECTURAL ENGINEERING OR ELECTRICAL DRAWINGS

NO.	DATE	REVISION DESCRIPTION	BY

PAPER SIZE: ARCH E (48x36)
 SCALE 3/4" = 1'-0"
 DRAWING NUMBER: E-b2