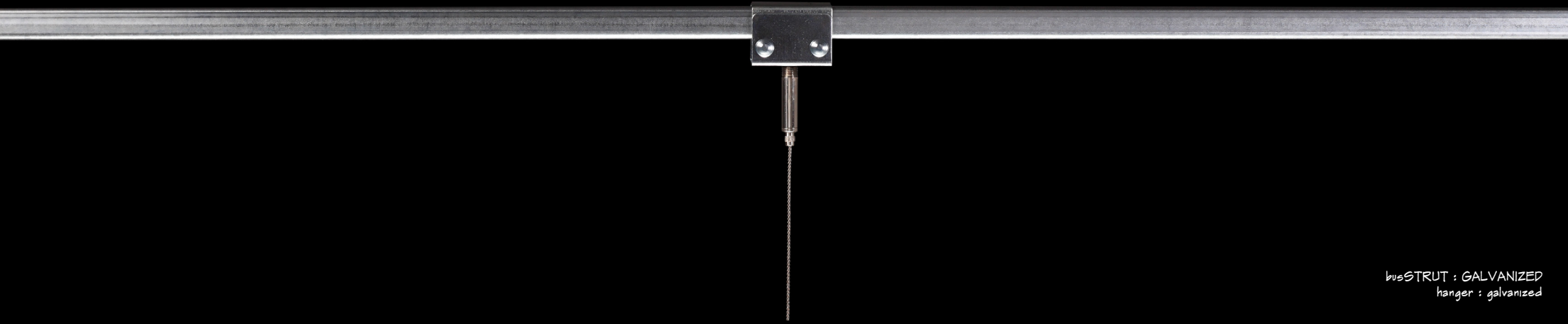


busSTRUT

SINGLE-DECK



busSTRUT : GALVANIZED
hanger : galvanized

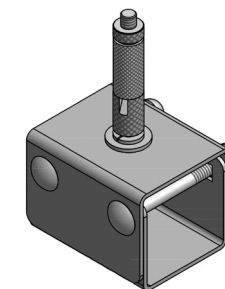
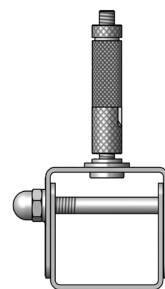
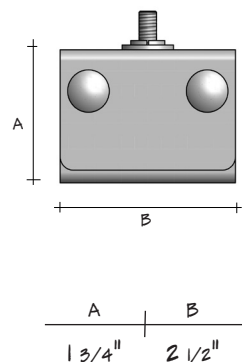
DOUBLE-DECK



busSTRUT : GALVANIZED
hanger : galvanized

HANGER / CABLE GLIDE

SINGLE-DECK

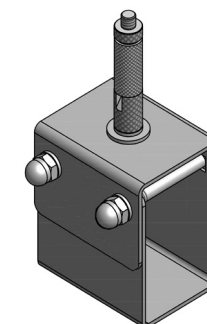
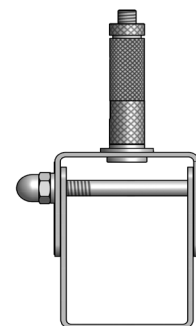
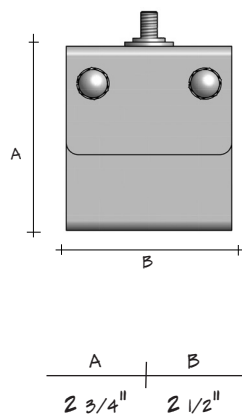


| busSTRUT (single-deck) | | |
|------------------------|--------|----------------|
| Product | Length | Catalog Number |
| Hanger | Single | HM-S-(F)-ST-H |
| Cable Glide | 15' | CG-15 |
| | Custom | CG-XX |

Finish - G=Galvanized W=White B=Black

Single-Deck Hangers are for use with all busSTRUT lengths. Each hanger is a pre-assembled two part unit. The upper half includes a threaded stud for cable glide attachment. 1/4"-20 bolts slide through to secure, align, and lock both halves of the assembly. Cables are attached to the hanger by sliding through the glide. 1/4"-20 eye bolt is for use with beam clamps (by others) and comes pre-installed to the cable.

DOUBLE-DECK



| busSTRUT (double-deck) | | |
|------------------------|--------|----------------|
| Product | Length | Catalog Number |
| Hanger | Double | HD-S-(F) |
| Cable Glide | 15' | CG-15 |
| | Custom | CG-XX |

Finish - G=Galvanized W=White B=Black

Double-Deck Hangers are for use with all busSTRUT lengths. Each hanger is a pre-assembled two part unit. The upper half includes a threaded stud for cable glide attachment. 1/4"-20 bolts slide through to secure, align, and lock both halves of the assembly. Cables are attached to the hanger by sliding through the glide. 1/4"-20 eye bolt is for use with beam clamps (by others) and comes pre-installed to the cable.